

WEATHER

	Min.	Max.	Freez.
Wednesday, Sept. 22	47	73	0.00
Thursday, Sept. 23	49	61	Trace
Friday, Sept. 24	36	66	0.00
Saturday, Sept. 25	42	65	0.05
Sunday, Sept. 26	52	63	0.00
Monday, Sept. 27	60	71	1.00
Tuesday, Sept. 28	50	86	0.00

By H. K. L.

The Chelsea Standard

ONE HUNDRED-SECOND YEAR—No. 15

14 Pages This Week

Plus 6-Page
Tab Supplement

CHELSEA, MICHIGAN, THURSDAY, SEPTEMBER 30, 1971

15c per copy

SUBSCRIPTION: \$4.00 PER YEAR

Bulldogs Gain Revenge Over Dexter, 16-7

Tough Saline Hornets Coming Here Friday For Conference Game

The Chelsea Bulldogs did it only by scoring in the last five minutes of the game, but they did it, defeating arch-rival Dexter, 16 to 7 in the Southeastern Conference opener played last Friday in Dexter.

It was a sweet revenge for Chelsea since Dexter spoiled the Bulldogs' bid for a perfect season last year by defeating them, 22 to 6, in the next to last game of the season.

Dexter scored first in the second period as Pat O'Doherty ran 51 yards for a touchdown. The extra point conversion was good and Dexter had the 7-0 lead which they held until the final minutes of the game.

Then with five minutes remaining in the fourth quarter, Wayne Welton threw a 33-yard pass to Dave Lukasik, and a 23-yard pass to Marty Cashdollar, moving the Bulldogs within scoring distance.

A screen pass, deflected by the Dreadnaught defense landed in the hands of lineman Keith Pfeifle who ran the ball to the two-yard line.

Pfeifle's reception was hotly contested by Dexter fans, but no illegal receiver penalty was called, despite Dexter protests.

Chelsea scored as Tom Lixey plunged two yards for the TD. Welton then hit slotback Randy Brier for the all important two-point conversion, and Chelsea led, 8 to 7.

Chelsea's second touchdown was set up by a long kickoff by Steve Knickerbocker, and a defense led

Library Board Increases Fee for Memorial Books

At their September meeting, the McKune Memorial Library board voted to change the minimum donation for memorial books from \$6 to \$8. The board was forced to raise the amount of minimum donations since the rising price of books has made it impossible to purchase satisfactory memorial books for \$6.

The board also announced that the new carpeting in the adult fiction, non-fiction and magazine rooms of the library has been installed. The carpeting and a new file for the archives, were made possible by private donations.

JV Rambles Over Dexter For 62-0 Win

The varsity game may have been close, but the JV game between the Chelsea Bulldogs and the Dexter Dreadnaughts was no contest as Chelsea rolled over Dexter, 62-0, Thursday to compile a two-win-no loss record for the season.

Chelsea scored in the first quarter on a 45-yard run by John Tandy. The extra point run by Marvin Guster was good, and Chelsea had the first eight of its 62 points.

In the second quarter, Chelsea scored again in a pass from John Houle to Dave Lathon who later-ally to Marvin Guster who then went 55 yards for the TD. John Tandy ran for the extra two points.

The third quarter saw Chelsea up the score to 38-0, as they scored three touchdowns. Marvin Guster went 48 yards for the first of the three, and Jeff Marshall

CHS Debaters Sweep Meet At Wayne State

Chelsea High School's varsity debaters now have a nine win-one loss record following their sweep of four debates at a combination debate clinic and tournament held at Wayne State University, Thursday, Sept. 23.

Chelsea debaters defeated Romeo, Thurston, St. Alphonse of Detroit and Warren Cousino high schools to achieve their perfect record for the afternoon.

In addition to the non-conference practice debate tournament, debaters from more than 20 Michigan high schools heard a debate on this year's topic, Resolved: That the Jury System in the United States Should Be Significantly Changed, by WSU varsity debaters, and a lecture on the subject by Detroit Judge Horace W. Gilmore.

In addition to varsity debaters Chick Lane, Mike Hergert, Janice Schramm and Dan Gaunt, 20 novice debaters also participated in the clinic.

Novices attending were: Neil Bollinger, Jeff Sprague, Steve Siebert, Ken Buxton, Barb Boylan, Pat Ball, Donna Clark, Jennifer Lane, Jeff Williams, Bob Schneider, Ectsy Belser, Carol Fairbrother, "Twinky" Beach, Jane Belser, Polly Van Slambrouk, Michelle McClear and Mike Merkel.

Chelsea's next competition will come Oct. 9 at Taylor Kennedy High school. There, a varsity team composed of Chick Lane and Dan Gaunt will debate both negative and affirmative positions in a "switch side" debate, in the A division competition.

In B division, Mike Hergert will be paired with a novice debater to form the affirmative team, and Janice Schramm and another novice will form the negative team.



CHEST INDUSTRIAL COMMITTEE—A planning meeting for the men involved in canvassing local industries during the 1972 Community Chest Campaign was held last Tuesday, Sept. 21. Shown here are Tony Bowen, Stanley Bond, Clark Renwick, Bert Pearson, and industrial division chairman Conrad Hafner. Missing from the picture are Tom McClear and Bud Ringe. The committee will meet once again before the campaign to organize the materials that will be distributed to plants late in the week of Oct. 4.



RESIDENTIAL AREA CAPTAINS for the Chelsea Community Chest campaign, which opens Oct. 10 met Tuesday, Sept. 21 to discuss their duties for the two week drive. Hard at work are Carolyn Dmoch, Pat Whitesall, residential division chairman; Sandy Centilli, Pat Borders, Priscilla Hale and Karen Galbraith. The captains are now working to contact the 60 to 70 volunteers needed for the residential area canvass. Anyone who has not been contacted and who wants to work may call Pat Whitesall, 475-2538. There will be a training session for volunteers on Oct. 7 at 7:30 p.m. in the Municipal Building.

man Conrad Hafner. Missing from the picture are Tom McClear and Bud Ringe. The committee will meet once again before the campaign to organize the materials that will be distributed to plants late in the week of Oct. 4.

Community Chest Workers Seek Helpers

The Industrial committee, and the area captains of the Residential committee both held organizational meetings last Tuesday night, as the preparations for the Oct. 10 opening of the 1972 Community Chest fund raising campaign increase in tempo.

The industrial committee, which will be responsible for soliciting \$17,531 of the Chest's \$26,007 goal, is concentrating on urging industrial employees to contribute through the payroll deduction plan offered by several local industries.

According to Hafner, the payroll deduction plan is already available to about 60 percent of the people who will be contacted by the industrial committee, and

at least two other plants have indicated that they are interested in making the program available to their employees.

The industrial committee, comprised of Tony Bowen, Stanley Bond, Clark Renwick, Bert Pearson, Tom McClear, Bud Ringe, and chairman Hafner, will initially contact plant managers by letter, then visit the industries in two-man teams to talk with those who will actually carry out the campaign in the plants.

The residential area captains, Carolyn Dmoch, Sandy Centilli, Pat Borders, Priscilla Hale, Karen Galbraith and Residential division chairman Pat Whitesall, are now in the process of contacting the 60 to 70 volunteers needed for the residential canvass.

They will hold a training session for the volunteers Thursday, Oct. 7 at 7:30 p.m. in the Municipal Building. Anyone interested in working as a volunteer who has not been contacted by phone should call Pat Whitesall, 475-2538. The residential committee is responsible for \$1,963 of the campaign goal this year.

Jaycees Plan Barbecue, Fall Color Tours

The air will smell of barbecued chicken again this Oct. 10, as the Chelsea Jaycees present their 16th annual barbecue and color tour.

The event will be held at the same place as last year—at the corner of Old US-12 and M-52. The Jaycees, under the guidance of Chairman Bob Updegraff, have lined up chefs Jim Gaken, Joe Doering, Hank Orthing and Ken Norris.

The annual Chicken Barbecue, which is expected to attract 2,500 people, will consist of two 60-foot concrete block pits, 200 lbs. of charcoal and 2,500 half chickens.

Each dinner will include one-half barbecued chicken, cole slaw, rolls and butter, chips and beverage on the side. Table service will be included with each dinner. Cub Scouts of the Jaycees sponsored Cub Pack will fold the 2,500 boxes in which the dinners will be served.

Advance tickets may be obtained from the Chelsea Lanes, Chelsea Drug or any Jaycee.

As an added attraction again this year, the Jaycees will be busy posting the color tour routes for local and out-of-town sightseers looking for the best fall colors in the Pinkney and Waterloo Recreation Areas. Along with each dinner the Jaycees will provide Color Tour maps indicating the most scenic routes for picnickers to take to enjoy the countryside.

(Continued on page three)

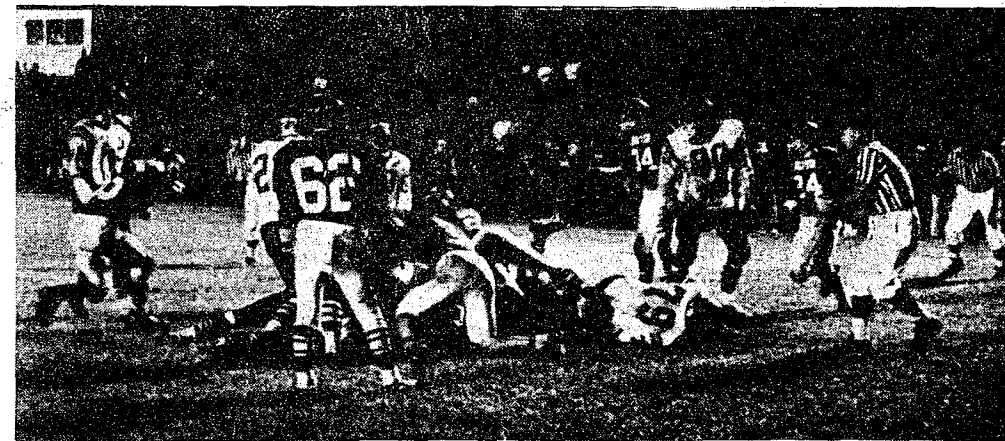
Medical Center Gains National Recognition

Two doctors and the administrator from the Chelsea Medical Center attended the national meeting of the American Association of Medical Clinics held recently in Cleveland, O.

During the meeting, 31 clinics—including the Chelsea Medical Center—were awarded certificates of membership or accreditation. Recognition by and membership in this association is a mark of excellence in the delivery of medical care in group practice, according to Dr. Michael Papo, director of the Chelsea Medical Center.

Among the speakers at the conference were Dr. Melvin Duval, assistant secretary of HEW, Dr. Wilson, administrator of HEW, and other nationally prominent physicians.

The main objective discussed was the delivery of total medical care at the community level. Medical Center personnel attending the conference were Dr. Michael Papo, director, Dr. Paul Brownson and Hal Pennington, administrator of the facility.



ALL TIED UP: The players were all tied up, but Chelsea still trailed by one point after Chelsea made its first touchdown of the game with five minutes to go in the fourth quarter. Tom Lixey plunged two yards for the score, after long passes by quarterback Wayne Welton to Dave Lukasik and Marty Cashdollar, and a tipped screen pass caught by Keith Pfeifle moved the Bulldogs into scoring range. After the TD, Chelsea trailed, 6-7.



DESPERATE MOMENT: It was probably the most desperate moment of the game. Chelsea needed two to win, and they went for it. Quarterback Wayne Welton passed to slot back Randy Brier on the extra point attempt following Chelsea's first



LAST POINTS: It was frosting on the cake, but Randy Brier (22) caught the two-point conversion pass from Wayne Welton following Chelsea's second, and final, TD to wind up the ball game with a 16 to 7 win for the defending Southeastern

Balmers Closing Garage After 27 Years of Service

Ted and Elsie Balmer have owned and operated Balmer's Brake Service for 27 years. It was a struggle to open it, and a hard decision to close it, but that's what they've done, and at 5 p.m. today, the doors of Balmer's garage will close for good.

Life-long residents of the Chelsea area, the Balmers' ventured into business on a shoestring in June, 1947 in a newly built 32' by 32' garage.

At the time Balmer decided to build the garage, he had been a mechanic for Harper Motor Sales for 12 years. He and his wife had acquired the Railway Express delivery franchise in Chelsea, and they decided to build the garage as storage space for the two enormous Railway Express trucks.

Ted went to Waldo Kusterer, who had given him financial backing when he and Elsie bought their house, and Kusterer again agreed to help.

It was pretty tight at first. During the construction of the garage, Balmer's contractor would figure the week's bill, and Balmer would then walk to Kusterer's to get the money.

But before the garage was entirely up, Graham Sprague, entering a casual look around the building said, "You've got room for five or six cars here."

That was that. Balmer decided almost on the spot to go into business for himself. According to his wife Balmer knew that night that he wanted to specialize in brake repair and that he would call his business Balmer's Brake Service.

By 1953 the service had expanded tremendously. The building has been enlarged to its present 60' by 60' size, two way radio equipment had been installed in the wreckers and AAA service had been added.

At the height of their business the Balmers employed two full-time mechanics, maintained three wreckers and a monster seven and one-half ton tandem wrecker and answered 70 to 80 service calls a day during bad weather.

But it wasn't the size of the Balmer's business that made it special—it was their spirit.

According to Mrs. Balmer, during the entire 27 years Bal-

mer has never turned down anyone needing help. "If he couldn't do it he'd find someone who could," Mrs. Balmer said. Sometimes, Balmer added, he'd go to bed at midnight then get up to answer four or five calls before morning.

One time a stranded young girl appeared at Balmer's needing a lot of work done on her car before she could get back on the road. Balmer agreed to do the job, and she waited while he worked on the cars ahead of her answering phones and helping out where she could.

When Balmer finished her car late in the day, she offered to leave her diamond ring until she could pay the bill. In recalling the incident Balmer said "I didn't want to be responsible for it so I wouldn't take it." He gave her a bill and she sent him a check.

The Balmers, Mrs. Balmer said, have never had anyone skip out on a bill.

They've never had a mechanic

they didn't think a fine man either. When Balmer, who was fire chief for approximately 15 years, was burned in the 1953 Spring Plant fire, the first mechanic they'd had, Floyd Rodrick, returned to run the business until Balmer recovered.

Balmer not only ran the brake service and served as fire chief, he also found the time to painstakingly restore antique cars. He restored the only Ann Arbor car ever built—a 1908 three-seated touring car that converted to a pick-up truck. He also restored a 1910 Oakland, a 1907 Deal, as well as other less exotic models.

He now has a 1923 Oldsmobile truck, acquired in horrible condition, which looks exactly as it did when it came off the line, right down to the hand tapered stakes on the rack.

After such an intense involvement in the business it was difficult to decide to close it, despite the fact that they've been deliberately cutting back in their service for the last eight years.

But last winter, the Balmers vacationed in Florida and liked it well enough to buy a house in Geneva. The rest of the decision came gradually after that.

"It was time," Mrs. Balmer said. "If we're going to do things together while we can still enjoy them, now's the time."

They plan to spend the winter in Geneva this year and if they "can see a future" they will settle.

And while Ted Balmer does agree, the wrench he feels is obvious. "Remembering it all," Balmer said, staring out the window of the garage, "is like writing an obituary."

Gary E. Ellenwood Enrolled at MSU

Gary Wesley Ellenwood, son of Mrs. Wesley Ellenwood and the late Mr. Ellenwood, 2M Buchanan, is now enrolled as a junior in natural resources and parks management at Michigan State University. His address is 869 Hubbard Hall, Michigan State University, East Lansing.



NONAGENARIAN: Charles Zahn, 11545 Pleasant Shore Dr., Pleasant Lake, will celebrate his 90th birthday this Sunday, Oct. 3. A life-long resident of Freedom township, Zahn is one of 11 children born to Jacob and Dorothy Bollinger Zahn. A retired farmer, Zahn makes his home with his brother, William. An open house honoring Zahn will be held Sunday, Oct. 3 from 2 to 5 p.m. at the home of Mr. and Mrs. Clarence Schneider, 11559 Pleasant Shore Dr., Pleasant Lake.



JEAN SWEET FUND: The First United Methodist church has established the Jean Sweet fund to aid the Sweet family with medical expenses which have been piling up during Mrs. Sweet's long illness. Mrs. Sweet has been a patient at the Chelsea Medical Center for approximately three months. Shown in happier times are the Sweets (from left to right) Margaret, Philip, Jean and Bill.

Fund Established To Aid Sweet Family Medical Costs

The Administrative Board of the First United Methodist church has established the Jean Sweet Fund to aid Mrs. Sweet and her family with medical expenses incurred during her long illness.

Mrs. Sweet has been a patient at the Chelsea Medical Center for the past three months. She and her husband, Mike, live with their two children at 148 Dewey.

Mrs. Sweet is a former owner of The Village Beauty Shop, and is an active member in the Methodist church Sunday school program and the Wesleyan Service Guild. She came to Chelsea from her native Korea nine years ago.

Those wishing to contribute to the fund may do so in one of two ways. Contributions may be made anonymously at the Chelsea State Bank by filling out a deposit slip for the Jean Sweet Fund, and placing money in the special account, or by making a contribution to the First United Methodist church office, 128 Park St.



Washington Report by Congressman MARVIN L. ESCH

House Committee has started rings on the "Conquest of Cancer Act." This legislation would authorize additional funds for research into the causes of cancer, possible cures of this dread disease. The National Cancer Institute has estimated that cancer claim 340,000 lives in 1971, that despite some improvements in treatment, the fatality is going up rather than down. One would think that the attention Congress is giving to the fight for greater initiatives to that cancer would be a good thing, but this isn't necessarily the case. For as the federal government moves in the direction of fighting the fight against cancer, there is the danger that cancer research might get caught in a political wrangling that often results from competing proposals. In my view, Congress should not let this happen. With so many deaths and so much suffering, the time element remains one of utmost importance.

Most of the disagreement will come over whether or not to create an independent, entirely new cancer agency, free from any connection with the Department of Health, Education and Welfare's National Institutes of Health. Those who want to maintain the NIH connection argue that the National Cancer Institute, one of

10 institutes at NIH, ought to go on with its work, and lead any forthcoming upgraded commitment. Others are pushing for the independent cancer authority which, they say, would more nearly equal the magnitude of the problem.

I believe the fear and threat of cancer is worthy of a national commitment, and that Congress must make certain that it creates a program that will provide new emphasis and financial assistance. Certainly no one could successfully argue that the \$230 million that Congress has appropriated for cancer research this year is adequate. The House Committee must take into consideration what level of funding is enough to do the job and what is the best method of meeting this task.

I feel that another word of caution is necessary. Unlike this nation's space program, where we have overcome tremendous technological difficulties, the problems in finding an answer for cancer are not as clearly defined. Even those with great expertise in cancer research are often at odds on the proper course to follow. While Congressional action must not be taken as a cure-all, it will, I am sure, hasten the day when we will find a cure; however, reports that this can be accomplished in one or two years are premature at best.



No Runs? No Hits? No Errors?

★ MICHIGAN MIRROR ★

By Elmer E. White, Secretary, Michigan Press Association

Milliken Moves

A very concerted effort to push the national image of the Republican Party further toward the center of the political arena away from the right edge is underway by Governor William G. Milliken.

The Governor, who has been a moderate to liberal Republican all his life, will be chairman of the national Republican Governors Conference during the 1972 campaign. That position makes his views more significant nationally than they might otherwise be and gives him a platform from which to press his approach.

The Traverse City native kept a low profile on the national scene during his first two years in office, since he had inherited his post and had yet to prove he could win a state-wide election. But as soon as he won last November, he started moving on the national scene and got some prompt results.

The first result was his selection as chairman of the GOP governors in a secret ballot over Oregon Gov. Tom McCall.

Though he had to grapple with state issues and this year's difficult legislature from January into September, he found time to pen a letter to GOP National Chairman Robert Dole of Kansas pleading for more moderation on the national scene by the GOP.

The Governor said the party spends too much time "converting the converted" and not enough time finding the votes it needs to win. He particularly was critical of the party's weekly publication, "Monday," which he felt was often too strident in its tone.

While the letter started out as a private communication, it surfaced during a GOP National Committee meeting in Denver and received national attention.

Milliken's most recent public push came in Puerto Rico at the National Governors Conference. In a meeting of the Republican

caucus, Milliken asked Dole if he planned to pay more attention to the Republican governors in the future. Dole said he would.

Afterward Milliken issued a statement summing up his feelings on the entire question.

"More and more in Michigan—and I think if recent polls are any indication, in the nation—voters, I believe, consider themselves not Republicans or Democrats but as independents," he said. "And I, therefore, believe that we have to make a plan and a very deliberate appeal as a party to independents."

"If we focus our approach on the declining hard core, and we emphasize efforts to convert the converted, I believe that we'll waste not only ammunition but efficiency, and we'll also turn away the independents upon whom we depend for support in winning in 1972."

"Our most important job, and our most important goal, ought to be to build our party into an active, vibrant political force that embraces people of all ages and of all races. And we're trying to do that in Michigan."

He also, he has made it clear, is trying to do that in the rest of the country.

Illness Indicated

If a mass screening program to check the health of state civil service employees is a valid sample of the general population, there are a lot of people walking around who ought to be seeing a doctor.

The mass screening involved physical examinations for 25,000 state employees at three permanent clinics and two mobile units over the past two years. The tests produced results which prompted either the hospitalization or the placing under a doctor's care of one out of every 10 persons tested!

"We have state employees not only alive, but alive and working today who otherwise might not be with us at all, or hopelessly disabled, because screening referred them to a physician for treatment when disease was in the treatable stage," says Dr. John A. Cowan, the retiring director of the program.

4-H Calendar

Monday, Oct. 4—Member and Leader Recognition, Chelsea High school, 7:30 p.m.
Tuesday, Oct. 5—Dairy Science 4-H VIP Day, McDonald Farm, Flint.
Tuesday, Oct. 12—Horse Leaders quarterly meeting, 8 p.m.
Thursday through Saturday, Oct. 14-16—4-H teen leadership school, Camp Kett.
Thursday through Saturday, Oct. 21-23—4-H teen leadership school, 4-H Teen Leader Conference, Camp Kett.
Friday and Saturday, Oct. 29-30—4-H Adult leaders horse training conference, Camp Kett.

MONEY TROUBLE? ONE PLACE TO PAY!

Credit Management Service
662-2565
215 South Fifth Ave.
Ann Arbor
State Licensed and Bonded

IF YOUR ROOF IS HURTIN' Call Burton!

- ★ Old and New Roofs
- ★ Hot Tar and Metal Roofs
- ★ Aluminum Siding
- ★ Aluminum Awning and Storm Doors and Windows
- ★ Seamless Aluminum Eaves Troughs and Down Spouts
- ★ Mobile Home or Trailer Skirting

COOPERATIVE ROOFING & SIDING CO.

Call 662-5900 or 662-3288
Evenings Call Burton Rathburn, 663-0754

JUST REMINISCING

Items Taken from the Files of The Chelsea Standard

4 Years Ago . . .

Thursday, Oct. 5, 1967—

Mrs. Leon Chapman of 629 N. Main returned to the United States Sept. 26 after a five-week vacation in Europe which included a visit behind the iron curtain. During her five-week vacation, Mrs. Chapman took many small trips from her base in Frankfurt, Germany, to other parts of Europe. She attended a cousin's wedding in Antwerp, Belgium, and went on a conducted tour of London. The highlight of her trip was her visit to Hungary, and to the small town of Veskeny where her mother was born and raised.

Another visitor to foreign lands, Robert Benedict, principal of North school, spoke to the Chelsea Kiwanis Club about his experiences with the British Education system in Thaxted, England. He said that the English education system favors the better student with education above the elementary level available only to those who can qualify.

Archie Bradbury, 20, son of Mr. and Mrs. Jay Bradbury, 9890 Baston Rd., is among 11 Michigan PFA members nominated for the American Farmer degree, PFA's highest award. Bradbury will attend the National PFA convention held Oct. 11 through 13 in Kansas City, Mo. The award will be presented Wednesday afternoon.

The Breathalyzer, a device which will detect alcohol on the breath will be put to use by Michigan law enforcement officers Thursday, Nov. 2.

fell in a roadside ditch, hitting him in the shoulder, and severing the tip of his left thumb. Taylor was shot and killed later that night by an Indiana State Trooper, after killing another Indiana Trooper near Scottsburg, Ind. Vogel was taken to St. Joseph Mercy Hospital in Ann Arbor, where he is recovering. Vogel is the father of four children, with a fifth expected in December.

Chelsea Products workers striking over the dismissal of a fellow worker, have gone back to work. Chelsea Products and UAW-CIO Local 437 reached agreement on a settlement Tuesday afternoon, and workers were back at their jobs Wednesday morning, after an absence of 26 days. The company agreed to rehiring the employee over whom the dispute started on a probationary status.

CHS gridders picked up their second consecutive win of the season last Friday, defeating Milan, 26 to 7. Chelsea had a slow start, trailing, 7-0, until the second quarter. The turning point in the game came after quarterback Denney Schumm faked to Eisenbeiser, then passed to Richardson who went all the way for the TD.

24 Years Ago . . .

Thursday, Oct. 2, 1947—

Farmers with land inside the square formed by Manchester Rd., Sylvan Rd., Pritchard Rd., and US-12 have been approached with in the last few months by a Detroit real estate man, and asked to sell their land.

Almost everyone in the entire section has agreed to sell, despite the fact that the name of the buyer remains a secret—even to those who have already sold their farms. Among those who have sold to the mystery buyer are Walter Wolfgang, Earl Weinkauff, Emil Regner, Mr. and Mrs. David Mohrlock, and Mr. and Mrs. Thomas Wortley.

The Chelsea Bulldogs suffered their first defeat of the season Friday night, losing to Flat Rock, 26 to 12. Penalties and a defense that crumbled after the first half contributed to the loss.

Mrs. Ida Johnson celebrated her 90th birthday Thursday, Oct. 2. A life-long resident of the North Lake-Chelsea area, Mrs. Johnson was one of five children of Par-

menus and Anna Marie Webb Watts.

Howard Brooks, Chelsea fire chief, was this month's recipient of the Chelsea Aerie, Fraternal Order of Eagles outstanding community service award. The award, which is designed to stimulate community activities, is given to those who have been actively involved in the welfare of the community.

34 Years Ago . . .

Thursday, Sept. 30, 1937—

Art K. Collins terminated more than 48 years of continuous service with the Michigan Central Railroad Co. on Sept. 25. Collins entered the service of the Michigan Central on July 3, 1889. Collins has been the local night operator at Chelsea since Oct. 23, 1914, and prior to that time was located at Grass Lake and Dexter. A letter of commendation from Supt. E. E. Wright, a superintendent of MCRR said, "I regret your leaving the service as our records show that during the years you were with us your services have been very satisfactory, but I trust that in leaving the service you will have many years of leisure to enjoy life."

Chelsea school students and faculty listed some of their favorite tunes for the Hi-Light this week. Virginia Gilbert favors "When I Grow Too Old To Dream"; Ruth Riemenschneider, "The Martins and the Coys"; Lucille Hoover, "When the Merry-Go-Round Broke Down"; Charles Winans, "Twilight in Turkey"; Mr. Cameron, "Harbor Lights"; LaVerne Neihaus, "Little Brown Jug"; Rolly S. and Fritz B. "Down By the Old Mill Stream"; and Betty Vogel, "Remember Me?"

The Chelsea High School debate club held their first meeting of the fall last Tuesday. This year's topic is, "Resolved: Most of the States Should Have a Unicameral Legislature." Debaters participating in the first meeting are S. Dingle, J. Fletcher, M. Sullivan, B. Schenk, J. Walworth, A. Martin, G. Koch, and P. Blecker.

Current jokes at Chelsea High include the one about the short sighted lady in the grocery store. "Is that the head cheese over there?" she asked. "No ma'am, said the salesman, 'that's one of his assistants.'" Said the senior boy to the junior girl, "Every-thing seems brighter after I've been out with you." Said the junior girl to the senior boy, "It should—you never go home until morning."

Uncle Lew from Lima Says:

DEAR MISTER EDITOR:

Football is as close to a legal fight as anything we got going, and it looks like the hole country is crazy over it. The feller that runs the country store won't allow a television in the place, so the fellers is double glad to get in the store Saturday nights and get away from the racket.

The store feller says TV has its place, but it ain't in a place of business or where folks talk to

one another. The thing about a picture, moving or not, he said, is that you're bound to get tired of looking at it soon or late. For instance, he said he wouldn't take anything for being able to watch the first man walk on the moon, but he wouldn't give a plug nickel to see a thousand more men do the same thing.

They is a battered dictionary under the counter that nobody but Ed Doolittle ever uses, and he jest looks up words in his clippings when he don't know what they mean and he wants to quote exact from some official statement or science paper. They is a Almanac in the store usual, and a Bible can be perused if the discussion gets so hot the fellers got to go to the source for an answer.

But they ain't no TV, and they ain't no football, and Saturday night the fellers was counting their blessings. Clem Webster said he looked at TV baseball at home ever now and then, and he could tell pretty much what was going on. But from now on thru the first of the year, Clem said, all he can see between the razor blade and beer commercials is big shapes with numbers running into one another.

Ed Doolittle, that has a daughter working in a city that has a live football team, said he went to a game once when he visited his girl. He allowed that the only difference from TV football is a million people is yelling in yore ear what is going on out on the field, and at least half of em ain't happy about it.

President Nixon is called the nation's No. 1 fan, Ed said, and that don't mean he blows more air than anybody. It means he likes sports, football special, and he goes out to a lot of the live games. The only reason he can see for the President taking time out for football, Ed allowed, is that it probably gives him cause to think about the rough side of the Russians and the Chinese. He might remind himself at ever game, Ed said, that them boys is more than ping pong and chess tournaments and trading moon dust samples.

While the communists is working on deals to make Mack trucks and entertain the President, they got stuff bubbling in different pots on the back burners. They's more in the papers right now about trade than about treaties to stop making germ weapons that can kill everybody 20 times over, but that don't mean we're out of the woods, was Ed's words.

So if Mr. Nixon can relax watching football, he has Ed's blessings.

Uncle Lew.

Howell Livestock Auction

The Wise Owl Says Ship to Howell
SALE EVERY MONDAY, 2 p.m.
Phone 546-2470, Bim Franklin
Mason 677-8941

Market Report for Sept. 27

CATTLE—

Good to Choice Steers, \$21 to \$23.75
Good-Choice Heifers, \$20 to \$21
Fed Holstein Steers, \$27 to \$30
Ut-Stu., \$26 and down.

COWS—

Heifer Cows, \$24 to \$26
Ut-Commercial, \$22 to \$24
Canner-Cutter, \$19 to \$22
Fat Beef Cows, \$19 to \$21

BULLS—

Heavy Boleros, \$26 to \$29
Light & Canner, \$26 and down.

CALVES—

Fat, \$43 to \$49
Good-Choice, \$35 to \$48
Heavy Deacons, \$42 to \$50
Cull & Med., \$35 to \$42

FEEDERS—

300-500 lb. Good to Choice Heifers, \$28 to \$32
400-700 lb. Good to Choice Steers, \$31 to \$36.50
300-500 lb. Holstein Steers, \$28 to \$32
300-500 lb. Holstein Cows, \$25 to \$28
Commercial-Med., \$25 and down.

SHEEP—

Woolled Slaughter Lambs:
Chelsea-Prime, \$27 to \$28.75
Good-Trimmed, \$24 to \$27
Slaughter Ewes, \$6 to \$8.50
Feeder Lambs, all weights, \$24 to \$26

HOGS—

200-250 lb. No. 1, \$16.50 to \$20.50
200 lb. and up, \$15.50 to \$19.50
270 lb. and up, \$17 to \$19.50
Light Hogs, \$18.50 and down.

Sows:

Parer Light, \$16.25 to \$18.75
200-300 lb., \$16 to \$18.50
500 lb. and up, \$15 to \$16

Boars and Stags:

All Weights, \$14 to \$16

Feeder Pigs:

Per Head, \$8 to \$12

HAY—

1st Cutting, 60c to 90c
2nd Cutting, 80c to \$1.50

STRAW—

Per Bale, 50c to 75c

COWS—

Tested Dairy Cows, \$300 to \$400
Tested Beef Type Cows, \$200 to \$300

Established 1871 The Chelsea Standard Telephone GR 5-3581

Excellence Award By Michigan Press Association
1951-1952-1953-1954-1955-1956

Walter P. Leonard, Editor and Publisher

Published every Thursday morning at 800 North Main Street, Chelsea, Mich. 48118, and second class postage paid at Chelsea, Mich., under the Act of March 8, 1879.

ADDRESS CORRECTION REQUESTED

Subscription Rates (Payable in Advance)

In Michigan:	Outside Michigan:
One Year: \$4.00	One Year: \$6.00
Six Months: \$2.25	Six Months: \$3.50
Single Copies: \$.15	Single Copies: \$.20
Service men or women, anywhere, 1 year \$4.00	

MEMBER
NATIONAL NEWSPAPER
Association - Founded 1888

National Advertising Representatives
MICHIGAN NEWSPAPERS, INC.
257 Michigan Ave.
East Lansing, Mich. 48828

THE CLASSIC PLUSH
BOASTS
A NEW BEAUTY
FOR THE MOOD
OF THE '70'S

LEES
DREAM ALONG

—for the woman
who loves pretty things.

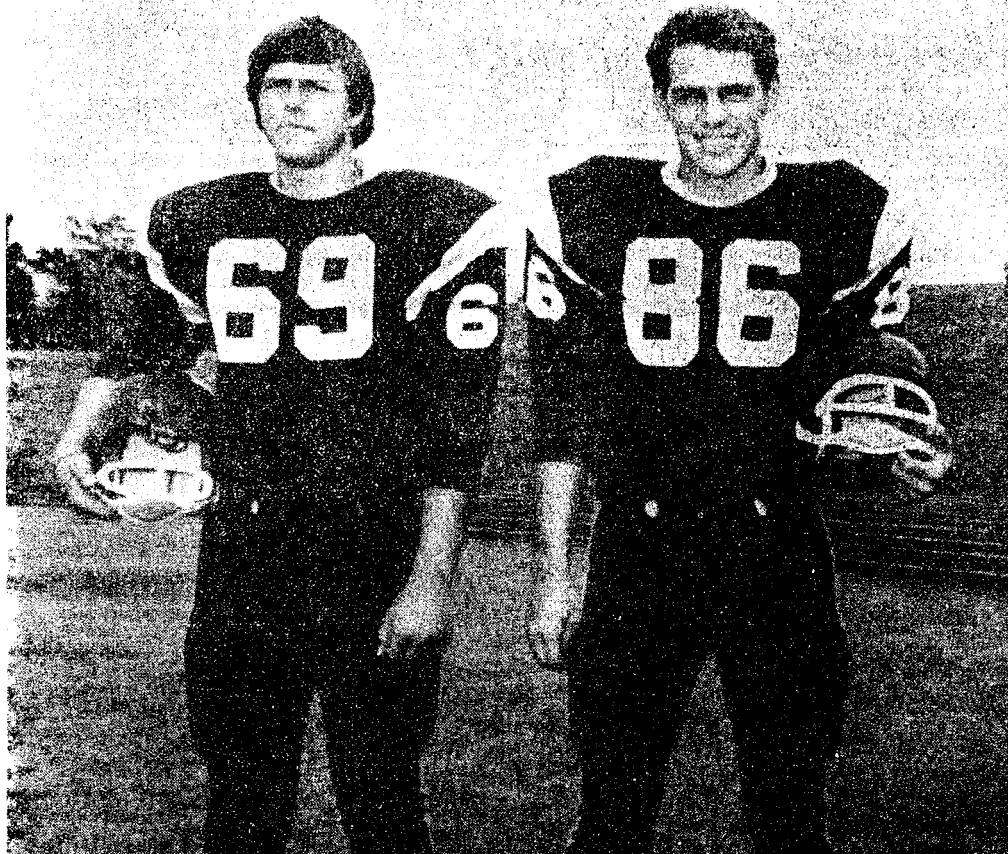
It's a textured plush carpet that has a "custom-made" look because it is made with 2 different yarn thicknesses of rugged durable nylon. Available in colors that are spirited to fit the life-styles of the Seventies. Some are ultra-sophisticated, others are lush in a more quiet way, and we even gave one or two a sensuous look. And each coloring is highlighted by a soft silken sheen.

\$11.95
sq. yd.
installed
REGULARLY \$13.95

MERKEL FURNITURE & CARPETS

Phone Chelsea 475-8621 for In-Home Service

Gridders of the Week



JOHN PORTER (69), a senior guard, is playing football for the second year this fall, his first on the varsity. A tennis lover, Porter was a member of the tennis club during his sophomore and junior years, and was a strong supporter of the push to have tennis approved as a varsity sport. It became one this year, and Porter plans to go out for the team. Porter likes to fish, hunt, water ski and snow ski, and says he'll "try anything once." This winter he and his sister will spend Christmas vacation skiing in the Austrian Alps. Following graduation from high school, Porter plans to go either to Washtenaw Community College or to a technical school to study some branch of electronics. During the summer and on Saturdays during the school year he works for Harry Denham. He has one sister, Rose, and lives with his parents, Mr. and Mrs. Willis Porter, at 212 Buchanan St.

STEVE KNICKERBOCKER (86), Chelsea's senior kicking specialist, has been playing football for five years, and is in his second year on the varsity this year. A self-proclaimed competitor who says he always plays to win, Knickerbocker has a variety of interests to serve as outlets for his competitive spirit. He is a bridge player, a small game hunter, tennis, soccer and touch football player, a snow skier, and a water skier. He plans to join the ski club this year, and also try out for the school play—he's been in the Music Man, South Pacific, and crewed for Bye Bye Birdie. Knickerbocker says he would like to stay with football as a career, perhaps as a pro football kicker, but plans to go to college and major in psychology to give himself an alternative choice. He has three sisters, Janna, Pat and Susie Holm, and lives with his parents, Mr. and Mrs. George A. Knickerbocker, at 1221 Freer Rd.

Firemen Called For 2 Minor Dwelling Fires

Chelsea firemen extinguished two dwelling fires and a grass fire this week.

An overheated chimney in a house owned by Richard Cutler, 13956 North Territorial Rd., caused a small fire in the siding near the chimney and smoke damage to the interior of the house on Friday, Sept. 24. Twelve Chelsea firemen extinguished the fire in approximately half an hour.

On Saturday, Sept. 24, Chelsea firefighters were called to extinguish an engine fire in a car owned by Walter Lutz, 8820 Scio Church Rd. The fire, however, was out before the firemen arrived. According to Fire Chief James Gaken, there was minor damage to the car.

Gasoline used to clean car parts, ignited by a hot water heater, caused a basement fire in a dwelling at 420 W. Middle St. Monday, Sept. 27. The house is owned by Mrs. Velma Dorr of Chelsea-Manchester Rd. According to Chief Gaken, there was some smoke damage to the interior of the house. Eight Chelsea firemen had the fire out in approximately half an hour.

Despite the rainy weather over the week-end, it's still dry enough for grass fires. On Tuesday, Sept. 28, Chelsea firemen extinguished three small grass fires along the railroad tracks near Cavanaugh Lake and Garvey Rds. The firemen had the fires out within 45 minutes after their arrival, Chief Gaken said.

Band Boosters Open Fruit Cake Candy Sales

The annual sale of fruit cakes and candy bars by members of the Chelsea band and the Band Boosters, will begin this Friday, Oct. 1, and will continue throughout the month.

This year, the organizers of the sale plan to place only one group order for fruit cakes. Thus, both Thanksgiving and Christmas fruit cakes should be ordered at once, Mrs. Gary Wright, co-chairman of the event said.

Co-chairman this year are Mrs. Robert Daniels, and Mrs. Wright. Captains are Mrs. Earl Klemer, Mrs. V. O. Johnson, Mrs. James Sprague, Mrs. Robert Schafer, Mrs. Philip Hume, Mrs. James Roberts, Mrs. Frank Sweeney, Mrs. Art Paul, Mrs. Robert Robbins, and Mrs. James Robbins.

Proceeds from the sale are used to help defray expenses of scholarships, band uniforms and band camp.

Color Tours ...

(Continued from page one)

Two colored maps will be distributed charting the five- and 15-mile routes through the recreation areas. Hopefully the autumn colors will be blazing by Sunday, Oct. 10 to produce a splendid show for all to enjoy.

Car Theft Thwarted

A 1965 Corvette belonging to George R. Turner, Jr., 19950 Old US-12, was the target of unsuccessful car thieves Saturday, Sept. 25.

The locked car had been left in the driveway at 603 W. Middle St. by Barbara Turner at approximately 10:30 p.m.

The attempted theft was discovered at approximately 11:30 p.m. by Mrs. Turner's uncle, who noticed that the car door was open when he left the Middle St. address. Chelsea police are investigating.

Enough milk is produced in Michigan annually to provide every citizen with 243 quarts. For the farmer, it is worth more than \$254 million, largest single source of farm income in the state.

Ship'n Shore

Taj Mahal Paisley. A shirtprint for larger sizes 38 to 44.

\$8



Softer colors give flair to a print that's distinctive without being splashy. Great as a pantop because of its extra length. Tie it with its own belt for a slenderizing look. In easy-care Sandcrepe of 80% Dacron® polyester, 20% cotton.

Also, good assortment of other Ship 'n Shore Blouses at \$5.99 and \$7.00

DANCER'S

Chelsea's Friendly Dept. Store

Jiffy market

COMPLETE SUPER MARKET

BIG ENOUGH TO SERVE YOU.....SMALL ENOUGH TO KNOW YOU!

Corner of SIBLEY & WERKNER RDS....CHELSEA, MICHIGAN

HOURS: 7 AM - 10 PM
OPEN 7 DAYS A WEEK
PHONE 475-5701

SALE PRICES EFFECTIVE THURSDAY, SEPT. 30, THRU SUNDAY, OCT. 3, 1971.

Store Hours Are 7 a.m. to 10 p.m. 7 Days A Week

<p>YOUNG PORK</p> <h2>PORK CHOPS</h2> <p>Loin Center Chops 89¢ lb. Rib Center Chops 79¢ lb. End Cut Chops . 69¢ lb.</p> <p>Whole Pork Loin 63¢ lb. Sliced, Wrapped, Quick Frozen at No Extra Charge!</p>	<p>GLENDAL SLICED</p> <h2>BOLOGNA</h2> <p>1-Lb. Pkg. 69¢</p> <p>SHENANDOAH</p> <h2>TURKEY ROLLS</h2> <p>White and Dark Meat 89¢ lb.</p> <p>GROUND FRESH DAILY</p> <h2>HAMBURGER</h2> <p>Satisfaction Guaranteed 69¢ lb.</p> <p>SIDES and QUARTERS OF BEEF AVAILABLE FOR YOUR FREEZER</p>	<p>U.S.D.A. CHOICE BEEF</p> <h2>STEAK SALE</h2> <p>Sirloin . . . \$1³⁹ lb. T-Bone . . . \$1⁴⁹ lb. Porterhouse \$1⁴⁹ lb.</p> <p>Whole Beef Loin \$1⁰⁹ 50-Lb. Average Sliced, Wrapped, Quick Frozen at No Extra Charge!</p>
--	--	---

JIFFY MARKET

FRESH BAKERY

Pies - Cakes - Rolls - Cookies
Bread - Cup Cakes - Donuts - Others
Old German Pretzels Wed. & Sat. Afternoons.

- SPECIAL -

FRESH HOME-MADE
COOKIES 49¢ doz.

FRESH MERCHANDISE ARRIVES 1 P.M. EACH AFTERNOON.

A New Line of Lunch Box Merchandise ...

LITTLE DEBBIE LUNCH CAKES

Nutty Bars - Swiss Cake Rolls - Fudge Brownies - Chocolate Snax Cakes - Oatmeal Creme Pies

12 individually wrapped cakes in a box 49¢

<p>Libby's CORN</p> <p>Whole Kernel or Cream Style</p> <p>1-Lb., 1-Oz. Can 19¢</p>	<p>CHEF ALEXANDER'S DELICIOUS</p> <p>Garlic Toast</p> <p>5-Oz. Box 39¢</p> <p>Save 10¢ per box</p>	<p>HOLSUM SOF-BUNS</p> <p>Hot Dog or Hamburger</p> <p>8 Count Pkg. 29¢</p>	<p>RISDON'S SUN-DEE</p> <p>YOGURT</p> <p>Choice of Flavors 19¢</p>
--	--	--	--

<p>FARMER PEET'S</p> <p>SKINLESS</p> <p>HOT DOGS</p> <p>12-Oz. Pkg. 59¢</p>	<h1>COCA-COLA</h1> <p>Pint No-Return Bottles 8 99¢</p> <p>This Equals One Gallon of Coke!</p>
---	---

<p>COLD BEER</p> <p>Available at Supermarket Prices!</p>	<p>Cigarettes</p> <p>ALL BRANDS \$3.39 Crtn.</p> <p>39¢ pkg.</p>	<p>MICHIGAN</p> <p>SOUR CREAM</p> <p>39¢ pt.</p>	<p>VELVEETA CHEESE</p> <p>Plain or Pimento</p> <p>2-Lb. Box 99¢</p>
--	--	--	---

MARATHON GAS PUMPS LOCATED AT JIFFY MARKET

Gas as well as Groceries - Meats - Beer - Wine - Bread - Pop - Ice Cream - Household Items
Milk - All at Everyday Low Supermarket Prices!

<p>REGULAR GAS</p> <p>33.9 gal.</p> <p>Includes All Taxes</p>	<p>PRESTONE ANTI-FREEZE</p> <p>\$1⁷⁹ gal.</p>	<p>PREMIUM GAS</p> <p>37.9 gal.</p> <p>Includes All Taxes</p>
---	--	---

GAS PUMPS & STORE OPEN 7 a.m. to 10 p.m. 7 Days a Week

AGE 23

Married Male Driver

Your A-O man will save you money on your car insurance. No surcharge or higher rate. See your A-O man — he's all out for you.

A. D. MAYER AGENCY, INC.

"Your Protection Is Our Business"

Phone 479-5061

115 Park St. Chelsea

Auto-Owners INSURANCE COMPANY
Home office at Lansing, Michigan

SPECIAL FAYGO POP

All Flavors - Mix or Match

24 12-Oz. Cans \$1⁹⁹

With 4 pages Pantry Stamps

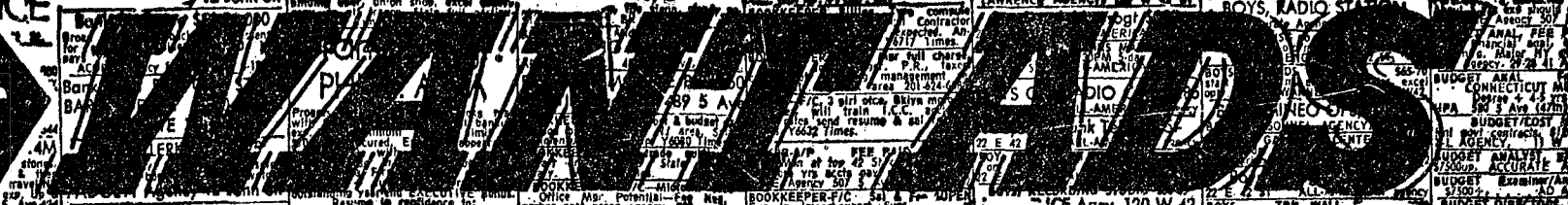
OPEN from 6 a.m. to 11 p.m. Every Day.
OPEN SUNDAYS for Your Shopping Convenience

GALLUP-SILKWORTH PUMP & PANTRY

295 S. Main St., Chelsea

Phone 475-7051

IT'S EASY TO BUY-SELL-RENT- HIRE & FIND WITH



Just
Call
GR 5-3581

WANT ADS

The Chelsea Standard

WANT AD RATES

IN ADVANCE—All regular advertisements, 50 cents for 25 words or less, each insertion. Count each word as a word. For more than 25 words, add 2 cents per word for each insertion. "Blind" ads or box numbers add 35c extra per insertion. LARGE RATES—Same as cash in advance, with 15 cents bookkeeping fee if not paid before 5 p.m. (includes printing publication. Pay in advance, send cash or stamps and save costs.)

PLAY WANT ADS—Rate, \$1.10 per column inch, single column width. Spots and 14-point light type. No borders or headlines type. Minimum 1 inch.

ADS OF THANKS or MEMORIALS—Single paragraph style, \$1.00 insertion for 50 words or less; 2 cents per word beyond 50 words.

DEADLINE—5 p.m. Tuesday week of publication.

SALE—Four tires, excellent condition, size 8-45-15. Call after 5 p.m. 151 E. Summit, Chelsea. x15

TOP DESK—Ash meat block. Ph. 428-8200. x19

This Week's Special

1971 PINTO

Many Extras
Only
\$1995

USED CARS

Lincoln 4-dr. air
Galaxie 2-dr. hardtop
Thunderbird, with air
Galaxie 500 2-dr. hardtop
Mercury 2-dr. hardtop
Thunderbird, air
Buick LeSabre
Galaxie 500 XL with air
Fairlane 4-dr.

TRUCKS

1969 Ford 1/2 ton
1969 Ford 1/2 ton
1967 International 1/2 ton pick-up
1965 Ford 1/2 ton
1969 Dodge 1/2 ton
1968 Chevrolet 1/2 ton

See Us About

Demonstrators
and Driver
Education Cars

PALMER FORD

Open Mon., Wed., Thurs., Till 9:00
Chelsea GR 5-3271 x15tf

LOST—Grill for 8N Ford tractor either on Stofer Rd. or N. Teritorial. Phone 475-2978. x16

WIREPLACE SCREEN and accessories for sale. Phone 475-2986. x16

APARTMENT FOR RENT—Unfurnished, 3-room apartment on first floor. Phone 475-4851 after 6 p.m. x15

ALLSTATE

INSURANCE

AUTO - BOAT - COMMERCIAL
LIFE - HEALTH - HOME
Phone Even; or Week-ends for

N. H. MILES, Agent
GR 5-8334

WANT ADS

BOARDING, trimming, training. Town and Country Kennels, Jackson Rd. at Baker. NO 8-7200. 7tf

Gem Travel Trailers and Campers

PICK UP COVERS
4' ————— \$100.00
28' ————— \$179.00 and up

Triangle Sales

Chelsea 475-4302 40tf

CLOGGED SEWER

Reynolds Sewer Service

We Clean Sewers Without Digging
Draums Cleaned Electrically
FREE ESTIMATES
2-YEAR GUARANTEE
Phone Ann Arbor NO 2-5277

"Sewer Cleaning Is Our Business—
Not a Side Line" 36tf

ALOUETTE—Pre-season sale on all Alouettes for '72. 2-machine trailers, Castrol snowmobile oil, complete line of clothing and accessories. Hap-Co Winter Sports, 15901 Seymour Rd., Waterloo. Ph. 475-7212. 13tf

1971 Clearance Sale

All of these cars qualify for Ex-
cise Tax Return if removed by
Federal Government.

1971 Electra 225 4-dr. hardtop
(air cond.). Sticker \$5761.80.
Sale, \$4733. (Demo.)

1971 Olds 98 4-dr. hardtop (air
cond.), full power. Sticker,
\$5966.69. Sale, \$4874 (Demo)

1971 Cutlass Supreme 2-dr. hard-
top (air cond.). Sticker price,
\$4561.71. Sale, \$3900 (Demo)

1971 Opel station wagon, auto.
trans. Sticker, \$2672.63. Sale,
\$2400.

USED CARS

1971 Skylark 2-dr. hardtop (real
nice) \$3195

1970 Electra 4-dr. sedan (air
cond.) \$3795

1970 Ford Ranch Wagon
(nice) \$2195

1970 Nova 2-dr., vinyl top
(307) \$1995

1969 Electra 225 2-dr. hardtop
(air cond.) \$2995

1969 Opel Spt. 2-dr. DLX, 10,000
actual miles \$1295

1968 Toronado (air cond.) \$2195

1968 Olds Cutlass 2-dr. hardtop
\$1695

1968 Volkswagen Ghia \$1295

1967 Olds Delta 88 4-dr. hardtop
(vinyl top) \$1395

1967 Olds Cutlass 4-dr. sedan
\$1295

1966 Olds 88 4-dr. sedan \$ 895

1966 Pontiac 4-dr. sedan (real
nice) \$ 895

1966 Falcon 2-dr. sedan \$ 595

1965 Olds Cutlass 4-dr. sedan \$595

1965 Rambler 4-dr. sedan (air
cond.) \$ 495

SPRAGUE

Buick-Olds-Opel, Inc.
1500 S. Main St., Chelsea
Phone 475-8664 15tf

YARD AND PORCH SALE—4
family, dishes, clothes, furniture,
antiques, misc. Reasonable. Oct. 1,
2, and 3, 264 Bohne Rd., next to St.
Johns church in Francisco. x15

WANT ADS

ROBERT PATRICK for home im-
provement, building and main-
tenance. Ph. 475-7460. 45tf

HAMMOND ORGAN teachers
wanted to teach in their own
homes. Call Grinnell Brothers, Ann
Arbor, 682-5687.

CALL FRANK for all your carpet
cleaning jobs, morning or week-
end. Needs only 2 hours to dry.
Only 10c per square foot. Phone
now for free estimate, 761-4328.
All work guaranteed. 33tf

PIANO TUNING, Chelsea and area.
Facilities for reconditioning and
rebuilding. Used piano sales; re-
conditioned grands and verticals.
E. Eklund, 426-4429. x50tf

Contractor Servicing Chelsea, Dexter and Manchester Areas

Complete Home Remodeling
Inside and Outside

Specializing in extra living space,
recreation rooms, kitchens and
panelling. Installing all aluminum
products, 5" eavestroughs, custom-
made awnings, windows and doors,
aluminum siding in many selected
colors and styles.

Please Call
DALE COOK
Chelsea 475-8868 50tf

CHELSEA School District

Five Beautiful
Country Sites
in
Noah Heights
Adjacent to Half
Moon Lake State Park

Model Open 2-6
Sat. and Sun.

Any time by appointment

Featuring

—Carpeting throughout

—2-car garage

—Full basement

—Hotpoint stove and
refrigerator

—All aluminum exterior

—Concrete porches, sidewalk,
gravel drive

—Storms and screens

COME OUT AND TALK TO US
ABOUT OUR WIDE VARIETY
OF HOME PLANS.

We know you will be pleased.

W. C. Weber

Construction Co., Inc.

12290 Jackson Rd., Chelsea, Mich.
475-2828 669-1985 475-4977

CHELSEA'S PREMIER BUILDER x8tf

WILL DO BABYSITTING in my
home. One or two children. \$20-
\$25 per week. Ph. 475-4071. 15

REAL ESTATE

6 ACRES, Sylvan township build-
ing lot. Price: \$8,000. Land con-
tract available.

SYLVAN TOWNSHIP—Well lo-
cated 64 acres excellent, level
land.

R. D. Miller
REAL ESTATE

Real Estate Broker
475-7311

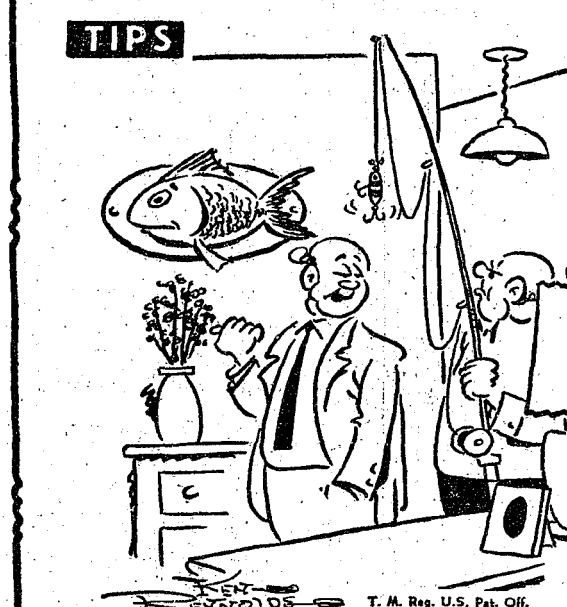
15775 Cavanaugh Lake Rd.
Chelsea, Mich. 14tf

WANTED—Male orderly, part time
evenings. Call Mrs. Dehn, Chel-
sea Methodist Home, 475-8663. x14tf

ELECTROLUX VACUUM CLEANERS

SALES and SERVICE
JAMES COX
Ph. 428-2931 or 428-8221
Manchester

TIPS



"One can find almost anything in the Standard
Want Ads - didn't you!"

WANT ADS

WORK SHOE HEADQUARTERS

Famous Red Wing Brand
\$12.95 to \$26.95

Foster's Men's Wear 34tf

JOHN WEBER AUCTIONEER & APPRAISER

Estate settlements, indoor facilities.
Auction or buy outright. Free con-
sultation and offers.
Ph. 426-3734, Dexter, Mich. x15

SMORGASBORD—Congrega-
tional church, Saturday, Sept.
25, 5:30 to 7:30 p.m. Adults \$2.25;
children under 12, \$1. 14

THORNTON 475-8629

BRICK RANCH—3-bedroom, fam-
ily room, dining room, fireplace.
Close to elementary schools. Coun-
try living in the village.

LAKEFRONT—Cavanaugh Lake,
completely renovated 2-bedroom
home, electric heat, fully carpeted,
wooded lot.

6 ACRES—3-bedroom farm style
home, just east of Chelsea. Barn
and 2-car garage. Complete priv-
acy.

ALSO
2-BEDROOM HOME—Half Moon
Lake.

DUPLEX—Ann Arbor.

BUILDING SITES:
10 ACRES—Trinkle Rd.
3 ACRES—Fletcher Rd.
10 ACRES—Sager Rd.

3 ACRES—Dexter schools.
LAKEFRONT—Cavanaugh Lake.
LAKEFRONT—South Lake.

MULTIPLE LISTING

John C. Pierson
ASSOCIATE

or

Robert H. Thornton Jr.
REALTOR

105 N. Main, Chelsea
475-8629 eve. 475-2064, 475-8857 x15

FOR SALE—2 Suffolk yearling
rams. Phone 428-9562, Gregory
Seckinger, R 1, Manchester. 16

GARAGE SALE—Saturday, Oct.
2, 10 a.m. to 4 p.m. 742 Book
St. 15

WOULD LIKE to care for 3- or 4-
year-old child in my home. Ph.
Mary Ellen Pierson, 475-8750. 16

If you want to get ahead, call
663-0521, ext. 35 for an interview. x16

Everybody's Happy . . .

"Smiling Service"
works two ways
here. Try it and see!

You'll leave us smiling with satisfac-
tion in our friendly, heads-up service.
We'll be smiling with satisfaction in a
new friend made.

PURE OIL PRODUCTS

JIM'S PURE SERVICE

Tires — Batteries — Tune-Ups — Brake Service — Wheel Alignment
PHONE 475-2822 501 SOUTH MAIN

WANT ADS

RADIO AND TV REPAIR. Bill
Smith and Bob Lindsay. Ph.
475-4374. x11tf

SAVE!

Now you can have
ADMIRAL
1972 Model
Color TV
at 1971 Prices

On display now!

Also, service on all makes TV,
radios, stereos and car radios.
Plus antenna supplies and instal-
lation.

Open Daily Until 7 p.m.

PORTER'S TV

212 Buchanan St., Chelsea
Phone 475-8380 16

FOR SALE—Grass Lake, 3-bed-
room, 2 baths, next to school,
partitioned basement, fenced yard,
built-ins and many extras. Asking
\$26,500 or best offer. Ph. (517) 522-8553, 903 S. Union, Grass
Lake. x15

IRISH SETTER, female, 10 mos.
old, field bred. Ph. (517) 851-
8559. x15

WANTED—Roll-top desk and
round table. Ph. 428-8200. x19

CHELSEA AREA

40-ACRE HORSE FARM—4-bed-
room large farm home, modern
kitchen, excellent barn. Priced to
sell.

1 1/2 ACRES—All brick, 3-bedroom
ranch home. Dining room, fam-
ily room, fireplace, 2-car attached
garage. 15 minutes to Ann Ar-
bor on blacktop road. Chelsea
schools. x23

MANCHESTER—Excellent buy, 3
unit income apartment, good lo-
cation. Priced to sell.

LIVE in the small-town atmos-
phere of Manchester, only 25
minutes to Ann Arbor. This is one
of the original majestic homes in
Manchester. It has been complete-
ly remodeled, 4 bedrooms and
sleeping porch, 2 1/2 new baths,
family room, fireplace, dining
room, 3-car garage, large lot, 125
x 176, professionally decorated.

71-ACRE FARM, 4-bedroom home,
15 minutes to Ann Arbor. Lo-
cated near Chelsea on blacktop rd.

LAKEFRONT, year 'round, 4-bed-
room home on Sugar Loaf Lake,
2-car garage.

BEAUTIFUL 10-acre building
sites. Some have woods and some
have streams. Priced to sell.

PORTAGE LAKE—3-bedroom,
year 'round home with lake ac-
cess. 2 lots and garage, excellent
condition.

Frisinger Realty Co.

Chelsea 475-8681

George Frisinger, 475-2908
Paul Frisinger, 475-2621
Herman Koenig, 475-2613
Hope Bushnell, 475-7180

Serving
Ann Arbor,
Chelsea
Dexter
Manchester

Member of Multiple Listing Service 14tf

JUST RECEIVED—Four rolls
Lee's rubber backed commercial
carpet. Ideal for kitchens and
family rooms. Four colors. Regu-
lar \$6.95, Sale \$4.95. Merkel
Brothers. x18

FOR SALE—1960 23-ft. Covered
Wagon self-contained travel
trailer, less than 1,000 miles. Reese
hitch, electric brakes, wiring har-
ness and mirrors. Needs some
work, \$1,200. Call 475-7836. x17

FOUND—3 pair Levi pants on
Main St. in front of Ford ga-
rage. Owner may claim same by
identifying and paying for this ad.
Palmer Motor Sales, 222 S. Main. 15

MECHANICS

Hospitalization, uniforms, life in-
surance, good hourly wage, and
time and one-half, at expanding
truck and trailer shop.

If you want to get ahead, call
663-0521, ext. 35 for an interview. x16

We're Your New
Kelvinator Dealer

Come out and see our display of
stoves, refrigerators and freez-
ers.

We also have the best in
dishwashers!
KITCHEN-AID

"HILLTOP"

1414 South Main St.
Chelsea, Mich. 48118
475-2949

New Hours: 7 to 5:30 daily
Friday 'til 8:30
Saturday, 7 to 3 15

WANT ADS

XEROX COPIES made. Merkel
Brothers. 41tf

PATCHING and PLASTERING.
Call 475-7489. 33tf

FOR REAL DOLLAR SAVINGS
be sure and see us before you
buy any new or used car. Palmer
Motor Sales, Inc. Your Ford Deal-
er for over 60 years. 2tf

FOR SALE—GE electric dryer in
good condition. Norge washer
needs repair. Both for \$10. Call
426-8893. x31

Custom Kitchen Cabinets

and
Formica Tops

Made to Order

475-2857 32tf

G. G. HOPPER

Building Contractors
Phone GR 5-5581
Gregory 498-2148 40tf

2-CYCO FUEL For All 2-Cycle Engines

WHITE GAS

Available at
Gateway
Sports Centre, Inc. 45tf

PRINTING from John's Shop—for
weddings, anniversaries or any
occasion. Satisfaction guaranteed.
Prompt service, reasonable prices.
Phone 475-7500. x21

ALCOA SIDING with Remodeling
—Since 1938. Prompt service,
professional workmanship. Wil-
liam Davis Contractor, Ann Ar-
bor, Mich. Estimat. no obliga-
tion. Phone (313) 663-6635. Com-
pleted work near you. x23

Hearthside Yarn Shop

5450 Conway Road

Yarns, needles, accessories
Free instructions in knitting and
crocheting with follow-up assist-
ance.

Orders taken for hand-made items.

Ph. 475-2014 36tf

Thinking of Building?

GO MODULAR!

Fastest home in the area.
Why Wait?
For estimate
Call

Evinger Builders
and Real Estate

426-3286 x15

REAL ESTATE

4-BEDROOM, farm home on 80
acres, good blacktop road, just
four miles from Stockbridge. New
oil furnace, barn, silo, and garage.
Almost all land tillable, large ap-
ple orchard. School bus to the door.
Good buy for large family. Only
\$45,000.

The Abbott Agency

105 W. Main St., Stockbridge, Mich

WANT ADS

SEE US for transit mixed concrete, Klump Bros. Gravel Co. Phone Chelsea 475-2530, 4920 Loveland Rd., Grass Lake, Mich. x40tf

TRAVEL TRAILERS — 13-ft. and up; 10x55 ft. trailers, John R. Jones Trailer Sales, Gregory, Mich. Phone 498-2655. x43tf

CAR RENTAL by the day, week-end, week or month. Full insurance coverage, low rates. Call Lyle Christwell at Palmer Motor Sales GR 5-3271. x25tf

CAR & TRUCK LEASING. For details see Lyle Christwell at Palmer Motor Sales, GR 5-3271. x49tf

WANT ADS

FOR SALE — Decca electric guitar, used one month. Also, size 9E football shoes, only used once. Phone 663-8228. x46tf

APPLES—Pick your own. \$1 a bushel. These apples have not been sprayed. Also pears and plums. Czapl's Orchard, 1817 Rank Rd., 7 miles west of Chelsea, off Old US-12. x16

FORMAL WEAR

Proms - Weddings - Special Events
6 different colors.

Foster's Men's Wear

MOTHERS! Here's a job you can handle. Have a debt-free Christmas plus earn \$1,000 or more from August to December. Adorable toys, 80 percent at \$3 and under. No gimmicks, collecting, or delivering. No cash investment. Free supplies. For information without obligation call collect: 426-2941, (517) 468-3477, or (517) 371-2948. x15

SPIKE'S FLEA MARKET

ANTIQUES AND COLLECTIBLES

Every Friday
1 p.m. to 9 p.m.

Every Saturday
and Sunday
11 a.m. to 7 p.m.

Auctions
Every Saturday
at 7 p.m.

Dealers and public invited.

4055 Page Ave.
Michigan Center, Michigan
(Page Ave. Exit, east 7/10 mile)
Phone (517) 764-0250 x13tf

HURRY! HURRY! North Lake Mini-Putt will be open Friday, Saturday and Sunday only during the month of Sept. Open 4 to 10 p.m. Located corner of Stoffer and N. Territorial Rds. Play mini-golf—it's fun! x15

NEW DUPLEX — Two bedrooms, stove, refrigerator, carpeting, full basement. No children or pets. 14182 N. Territorial Rd. Call after 6 p.m. 426-3737. x15

WANT ADS

GUITAR INSTRUCTION. Classical, folk, pop. Emphasis on theory. Only \$8.50 for 1/2 hour. Phone 475-1129. x47tf

LAND CONTRACTS PURCHASED. ED. Call R. A. McLaughlin, 475-8888 or (517) 366-7765. x12tf

REDUCE EXCESS FLUIDS with Fluidex, \$1.69. Lose weight safely with Dex-A-Diet, 98c, at Chelsea Drug. x15

TRENCHING — Water, electrical lines, footings, etc., 4 to 14 inches wide, 0 to 6 feet deep. Call Charles Slocum, 475-7611 evenings. x6tf

EXPERIENCED CHILD CARE in my home, any time. Phone 761-8701 after 6 p.m. x5tf

Real Estate For Sale

NEW LISTING—Large 3-bedroom country home. Formal dining room plus dinette, den with fireplace, 3 baths, 2 1/2-car garage, central air-conditioning. Located on 1 1/4 acres. Close to town. \$60,000. x15

BRAND NEW — 3-bedroom brick, picture window overlooks golf course, 2 ceramic baths, 2 fireplaces, large (unfinished) rec room, 2-car attached garage. \$48,500. Financing available. x15

7 1/2 ACRES — All inside village limits. Has 3-bedroom house, garage, 745 feet of railroad frontage. \$30,000. Terms. x15

CLARENCE WOOD

BROKER
Efficient PERSONAL Service
646 Flanders St.
Phone 475-2033 or 475-8217 x16tf

APPLES—Pick your own. Apple Hill Orchard. Fresh cider and donuts. Open daily 9 a.m. to 6 p.m. 4260 Willis Rd., 1/2 mile east of Pysilanti Hospital off US-23. Phone 434-2828. x13tf

APPLE BUTTER FESTIVAL, Oct. 9. Sponsored by Unadilla Presbyterians, in Unadilla. x16

FOR SALE—German Shepherds, 2 males, 3 months old, 2 females, 10 months old. Ph. 475-7836. x17

FOR SALE—Year-around home at Pleasant Lake, 12 miles north of Jackson. 5 rooms and bath, large breezeway and storage room. Large lot with lots of trees and shrubs. Ken Eberly, 107 Water St., Stockbridge. Phone 551-7552. x15

WANTED—Mature woman over 19, for cashiering, receptionist and miscellaneous duties. No office skills required. Hours: Mon., Wed., Thurs. and Fri., 3 p.m. to 8 p.m. Call Magic Mirror for interview, phone 668-9843. x15

FOR SALE—Chevy camping van. Good for hunting. Sleeps 6. Ph. 475-7678. x16

GREG AND BRIAN have four bundles of fur to give away. Their kittens are all trained and need a good home. Ph. 475-7160. x15

HELP WANTED — Homemaker service needs female full-time persons to help families and the elderly. Ph. 971-6528. x16

FREE—Cute little Halloween kittens to be given away. Kitty litter trained. Phone 475-8087. x16

TINY PEKE-AHUAHUA PUPPIES—\$35. Also Early American couch, \$25. Antique kitchen cabinet, antique vanity and electric dryer. Ph. 475-2426. x16

FOR SALE — Female German Shepherd, \$15. Phone 475-7568. x15

WANTED TO RENT—1- or 2-bedroom country home or cottage. Chelsea-Dexter-Waterloo area. Responsible newbyweds. Reply to Box S-3A, The Chelsea Standard. x16

DO YOU NEED masonry work done? Phone Ken Young, 426-3942. Basement laid for 50c per block. Free estimates on brick work and fireplaces. x27

OPTICAL SERVICE — Winans Optical, 114 N. Main (Sylvan Hotel), Chelsea, Mich. x16

RAILROAD TIES—14 ties, plus 11 good, some not so good, some half-ties (4 ft.) \$25. You haul. Phone 475-2045. x16

BIG YARD SALE—Lots and lots of items, furniture, toys, clothes, antiques, car parts, etc. Something for everyone. Come to 1817 Rank Rd., 7 miles west of Chelsea, off Old US-12, and one mile south on Rank Rd. x16

WORK WANTED — Carpenter wants part time work. Reasonable rates, satisfaction. Remodeling and all carpentry work. Phone Gregory 498-2831. x15

WANT ADS

FOR SALE — 16", 20", 24", 28" bikes. 419 Wilkinson, Chelsea. x15

HELP WANTED—Female, from 3 to 11 p.m. Wash 'n Dry, 114 W. Middle. Ph. 475-2755. After 5 call 475-2684. x15

YEAR AROUND COTTAGE for rent. Chelsea area. Furnished. Couple only, no pets. Ph. 426-4563. x14tf

IRONINGS WANTED—Call today, 475-8923. x16

LOST—White toy poodle, Main St., Chelsea. Child's pet. Reward. Phone 475-4011. x15

GARAGE SALE—Good used clothing, dishes, books, some furniture, odds and ends, and toys. Immanuel Christian Youth Club, 184 E. Summit St. All day, Saturday, Oct. 2. x15

GRAPES FOR SALE—Pick your own. Phone Manchester 428-9784. x15

ST. BERNARD PUPPIES — Six males, nine weeks old, all shots and wormed, \$75. Call Grass Lake, 622-4747, 7991 Greenwood Rd. x15

5 MONTHS OLD RETRIEVER to give away to good home. Phone 475-8708. x15

MOVING — YARD SALE Saturday, Oct. 2, Sunday, Oct. 3. Ping pong table, furniture, household and cooking items, books, clothing, misc. items. \$345 N. Zeeb, Dexter, north of Chrysler plant. Ph. 426-4782. x15

HUGE YARD SALE — Several families. Friday, Saturday and Sunday, 9 a.m. to 6 p.m. at 8338 Central, Dexter. x15

REPAIR SERVICE for household refrigerators, freezers and garbage disposers. Call Bill, 426-8314. x12tf

FOR RENT — New, one-bedroom furnished apartment. No children or pets, references. Ph. 475-3604. x15

FREE KITTENS—Bill Merkel, 124 W. Summit. Ph. 475-8787. x15

HELP WANTED — Saleslady for downtown store in Chelsea. Write Box SE-30, care of Chelsea Standard, Chelsea, Mich. x15

AUCTION—Sunday, Oct. 3, 2 p.m. Everything must go, new and used merchandise. Do your Christmas shopping nearby. Gifts for the whole family. Walden's Auction Barn, 15600 Harmon Rd., Manchester. Phone 428-7216. x15

FOR SALE — AKC Maltese and toy male poodle. Phone 475-8784. x15

FOR SALE — Dining room suite, table, 6 chairs, buffet, china cabinet, GE stove, 40" double oven, grill, roaster, meat thermometer. Phone 475-9709. x15

FOR RENT—Fair Services Center for meetings, parties, wedding receptions, etc. Weekdays or weekends. Contact John Wellnitz, phone 475-4431. x15

RUMMAGE SALE—Spaulding for Children, Friday, Oct. 8, 9 a.m. to 9 p.m., at Sylvan Town Hall. Hall open Thursday, Oct. 7, 9 a.m. to 6 p.m. to leave rummage. Antiques for sale from the Spaulding farm. x16

FOR SALE — Trained Beagle hounds and guns. Jim Kosinski, 1820 M-52, Chelsea. Phone 475-7994. x16

FOR SALE — One Remington .22 long rifle, and one 20 gauge shotgun. Phone 475-2268. x15

WANTED—Riders from Waterloo area to Detroit downriver area. Trenton afternoon shift. Phone 475-2447. x15

FREE KITTENS—Short-haired, 3 months old, tame. Phone 475-2237 after 5:30 p.m. x16

FOR SALE — McIntosh apples. Four miles south of Manchester on M-52, corner of Bowens Rd. 15

FOR RENT—Furnished 2-bedroom mobile home, on 2 acres. Teachers or middle-aged couple preferred. Call week-days after 6 p.m. Detroit 825-6281. x15

BABYSITTING in my home, day or night, 208 South St. Phone 475-7822. x17

LOST—Half Siamese females; one cream with tiger points and blue eyes, and on Sept. 12, silver spotted tiger, white on chin and under nose. Island Lake at Werken. Answer to Samantha and Susie. Reward. Call Dr. Clark collect, (313) 366-7574, between 9 a.m. and p.m. weekdays. x17

SANTA'S COMING—Make extra shopping money now showing gorgeous cosmetic gifts and professional makeup secrets. Your own hours; will train. Viviane Woodard Cosmetics, Phone 475-8785 or 475-5491. x15

FOR SALE—1970 Karmann Ghia, excellent condition, snow tires. Phone Stockbridge (517) 851-7811 after 6:30 p.m. x15

'Book Beat' Starting Oct. 3, Interviews Best Seller Authors

East Lansing—Book Beat, the series which features conversations with the authors of today's best sellers, debuts at 12:30 p.m. Sunday, Oct. 3, on WMSB (Channel 10), Michigan State University television.

Robert Cromie of the Chicago Tribune is the program host for the series, which has been in existence for several years but is making its first appearance on WMSB.

Dr. Ronald Glasser, whose recently published book, 365 Days, takes up where the news stories

leave off—in the hospitals that received maimed and dying Americans evacuated from Vietnam, is Cromie's guest.

The 32-year-old physician treated scores of Vietnam casualties in an Army evacuation hospital in Japan during his year-long tour of duty in 1968.

His book records brief but vividly detailed sketches of the troopers, pilots and medics who were his patients, and their reactions to their injuries and the war. Sen. George McGovern has called the book "one of the most gripping accounts . . . I have yet seen. No one can read this book without tears."

Other WMSB highlights include:

ON ASSIGNMENT
"Anchorman and correspondent Craig Halverson examines the status of Indian-white relations in Michigan at 10 p.m. Sunday, Oct. 3.

Centering primarily on relations in northern Michigan, the report takes an in-depth look at the controversy surrounding the annual Fort Michilimackinac Pageant. "Moose" Pamp, leader of the Great Lakes Indians Youth Alliance, is one of those who have objected to the pageant as portraying the Indian as brutal and savage. On the program, he gives his assessment of how the Indian is viewed today. Local businessmen in the Mackinac City area and the chairman of the pageant also give their views on the controversy.

In another segment, reporters look at the status of private aviation—what ages and types of people are participating, the cost of flying as a hobby and the facilities available in mid-Michigan.

ARTS BILLBOARD

Ken Beachler, director of the MSU cultural activities office, hosts a special program which takes a look at upcoming events on the Michigan State University Lecture-Concert Series and other cultural attractions scheduled in the greater Lansing area at 7 p.m. Wednesday, Oct. 6.

The special emphasis on the program is a preview of Festival '71, a week long series of concerts set for late October. The Festival '71 week begins with the Saar Chamber Orchestra from Germany and will feature the Buswell-Jarrell Carlin Trio, a dance film, a recital by five young concert artists and pianist Garriek Ohlsson, the first American Winner of the Chopin International Competition.

Beachler also talks with Dorothy Jones of the Lansing Dance Council and Kenneth Bloomquist, director of MSU Bands. Bloomquist will preview the MSU Homecoming with jazz great Al Hirt.

SUB-ARCTIC JOURNEY

Pianist Glenn Gould provides an almost surrealistic journey through the splendor of the Canadian sub-arctic on Realities "The Idea of North" at 4:30 p.m. Sunday, Oct. 3.

Gould created both the script and the sound for this unusual documentary which details the journey of an imaginary young man traveling by train to the west side of Hudson's Bay.

SPARTAN SPORTSLITE

Hosts Jim Adams and Terry Braverman lead off their weekly review of Spartan sports action with filmed highlights from the MSU-Notre Dame clash at 7 p.m. Monday, Oct. 4.

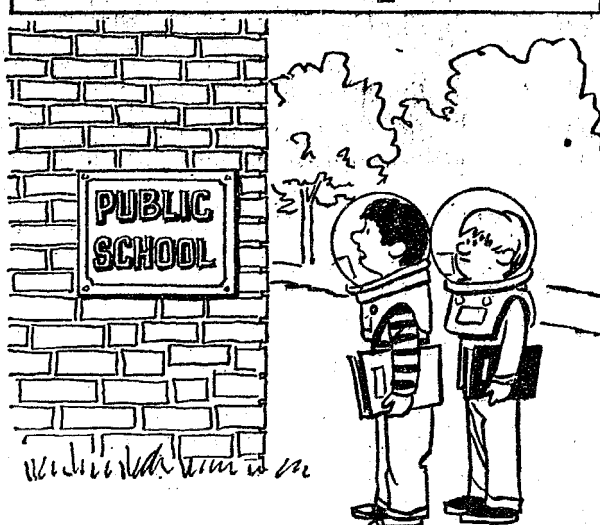
Following up the scenes of the week-end performance, Jim and Terry turn to the coming week-end battle with a scouting report on the Spartans' arch rivals, the Michigan Wolverines. Both teams will be playing their second conference game of the year when they meet Saturday in Spartan Stadium.

EVENING AT POPPS

Arthur Fiedler and the Boston Pops devote an entire program to the Broadway show music of Rodgers and Hammerstein at 1 p.m. Sunday, Oct. 3.

Baritone Robert Trehy and soprano Lee Venora of the New York City opera will join the performance to sing the music from "State Fair," "The King and I," "Carousel," "South Pacific," "The Sound of Music" and "Oklahoma." Evening at Pops will be rebroadcast at 11:30 a.m. Wednesday, Oct. 6.

Generation Gap U.S.A.



"Alien environment . . . glad we wore our space helmets."

TODAY'S THOUGHT

By LOUIS BURGHARDT

Many stories dramatize the greatness of Lincoln. Read this, for example—

Lincoln was riding in an open carriage—with a large plantation owner. When they passed an old colored man, the slave bowed and tipped his hat. Lincoln smiled and tipped his hat in return to acknowledge the courtesy.

The astonished landholder asked, "Why, should you, of all people, tip your hat to a slave?"

Lincoln replied, "Because I prefer not to be outdone in courtesy by anyone."

Thoughtfulness for and toward others are trademarks of great men. They see and respect a dignity in their fellow-men. Thoughtfulness, instead of thoughtlessness, in attitude and reaction has always been and always will be a pretty good yardstick to measure anyone's character. . . . BURGHARDT FUNERAL HOME, 214 East Middle St., Chelsea, Mich. Phone GR 5-4141.

SPECIALS

FARMER PEET'S BONELESS

Bonanza Hams . . . lb. 83c

(whole or Half)

ECKRICH ALL-BEEF

Hot Dogs . . . 1-lb. pkg. 73c

12-OZ. BAG NESTLE'S

Chocolate Chips 48c

6 1/2-OZ. CAN CHICKEN OF THE SEA CHUNK

Tuna Fish 2 for 79c

McINTOSH

Apples 4-lb. bag 43c

KUSTERER'S

FOOD MARKET

DIAL 475-2721 WE DELIVER

BANK AUTO

LOANS ARE

BEST!



ANY TRIP YOU MAKE will be more pleasant, if the car you drive is financed the Bank Way—economically, conveniently and with local people.

CHELSEA STATE BANK

Member Federal Reserve System FDIC Member Federal Deposit Insurance Corp

CHELSEA JAYCEES CHICKEN BARBECUE SUNDAY, OCT. 10

Corner of M-52 and Old US-12, Chelsea

Serving Starts at 11 a.m.

2,500 Dinners Will Be Served
PUBLIC INVITED

\$1.75 per serving

— Sponsored By —

CHELSEA JAYCEES

BOB UPDEGRAFF, Chairman

Spread the Good Word!

...about Dutch Boy's brand new house paint—it's the latest...it's Latex! You've never seen such a smooth-flowing, easy-going paint for any kind of exterior surface—it cut painting time in half!

there's a new HOUSE PAINT

It's a rugged, Acrylic Latex paint that defies the weather, comes in colors that won't fade and won't chalk. Dries in 30 minutes. What's more, you can stop and start as you please, with never a lap mark!

Dutch Boy LATEX HOUSE PAINT



We're here to tell you, this new Latex House Paint is Dutch Boy quality, through and through. Easy clean-up with tap water. So take it easy, get top results with this great new house paint!

MERKEL BROS.

Open Mon. & Fri. Until 9

Ph. Chelsea 475-8621

FEED FOR PROFIT

BIGGER PORK PRODUCTION FOR YOUR FEED DOLLAR . . .

For thriving sows, fast-growing pigs and fast-gaining hogs, count on our enriched feeds . . . see the results in fatter profits for you.

Farmers' Supply Co.

Phone GR 5-5511

GRAND OPENING SPECIAL NOW

Thru October 9th
We will strip all paint or varnish from any SIDE CHAIR

Delivered to Our Studio for ONLY

\$3.00

This is Regular \$6.50 to \$8.50 Value, so YOU SAVE up to \$5.50

This offer is made to introduce the revolutionary CROSSLAND Process for removing unwanted paint & varnish from furniture.

CROSSLAND

Furniture Restoration STUDIO

8640 North Custer & Ida-Maybelle Roads
Monroe County

From Ann Arbor: US Rt. 23 to Dundee Exit, Rt. 50 East to Lewis Ave. Then North to Custer. From Monroe: Northwest on Custer.

YES

WE ARE MAKING LONG-TERM FARM REAL ESTATE LOANS

SEE US

Federal Land Bank Association

P. O. Box 1006
Ph. 769-2411 3645 Jackson Rd.
Ann Arbor, Mich. 48103

THE LANSING REPORT

FROM
senator
GIL BURSLEY



Looking back over the 1971 session, I can state with satisfaction that my colleagues in the Senate have given me unprecedented support this year.

As sponsor of the abortion-law-reform measure that finally won approval in the Senate this session, only to be stalled and prevented from coming to a vote in the House, I am assuming an active role in the drive to submit this question to the wishes of the electorate. The time has clearly come for more direct action. Any person wishing to assist in this drive by circulating petitions may contact my office in Lansing.

Where another area of needed reform is concerned—the area of education—I believe the 1971 session has made a really constructive beginning. As chairman of the Senate Education Committee, I sponsored, perfected, and won Senate approval for several key school-reform measures: a bill to streamline and improve the structure and functions of our intermediate districts, a bill to require each local district to operate a high school program, and a bill to make Michigan a member of the Education Commission of the States.

I co-sponsored other measures I regard as meaningful gains, including an educational telecommunications bill and legislation to permit reciprocal agreements on teacher certification. One educational measure that I introduced passed both houses and became law this year—a bill to permit intermediate districts to issue bonds to build facilities for trainable mentally handicapped children.

The Education Committee is making in-depth studies of various methods of distributing state-collected taxes funds back to local school districts and of the various rules and policies governing local transportation of school children.

Two resolutions which I introduced on behalf of the Education Committee were approved by the legislature. They ask the State Board of Education to prepare guidelines on environmental education and drug education for possible local school district adoption. Other gains made this session deserve mention. I have introduced a major revision of Michigan's outdated business corporation code and, although the subject may be of little interest to many citizens, it could have a major effect on the economic climate that affects us all. My bill to continue a free market for mortgage money in Michigan was signed into law. After a three-year fight, my bill permitting creation of bank holding companies was passed and became law. This action may mean much to the Michigan economy.

Other measures I am sponsoring include creation of a population commission, possible establishment of a Michigan Research Institute as a transformation of Willow Run Laboratories, repeal of the coyote bounty, regulation of highway billboards, guidebooks and distress flags for the handicapped, co-operative nursery pre-schools, pro-

bate code revision, provision of family planning information, and repeal of the intangibles tax.

Higher education is receiving \$312,961 million of which \$78,136 million goes to the University of Michigan and \$19,684 million to Eastern Michigan. The University of Michigan also receives \$6.96 million for the Neuropsychiatric Institute. Ten years ago, in 1961-62 the University of Michigan received only \$35.4 million dollars and Eastern Michigan only \$3.2 million dollars. This gives you some concept of the tremendously increased support the legislature has been according these institutions.

4-H Demonstration Contest Set Oct. 9 At Arborland

Washtenaw county 4-H Demonstration Contest will be held Oct. 9, 10:30 a.m. till 3 p.m. at Arborland Shopping Center.

Participation is open to all 4-H members. Entry categories include Conservation and Environmental Quality, Foods, Personal Appearance, Home and Family, Plant Science and Horticulture, Arts and Crafts, Animal Science and others.

Demonstrations may be individual or team and are limited to 8-10 minutes in length. Ribbons will be awarded to all participants. Each 4-H club is invited to send at least one participant to the Demonstration Contest.

A 4-H promotional booth will also be operated in Arborland during the contest.

Membership Plaque Will Be Given to First Baby During 4-H Week

It has been said that 4-H is going to the babies. Well in this case, the statement is true.

According to Duncan Sanford, Washtenaw 4-H Youth Agent, the 4-H office will present an Honorary 4-H Membership Plaque to the first baby born in Washtenaw county during National 4-H Week, Oct. 3-9.

Sanford said the purpose of the honorary membership is to help publicize 4-H and to encourage more families to participate in 4-H activities.

Local hospitals are co-operating in providing information on the first births.

CHS Football Schedule

Oct. 1—Saline	home
Oct. 8—Lincoln	away
Oct. 15—Novi	away
Oct. 22—Dundee	home
Oct. 29—South Lyon	away
Nov. 5—Milan	home
Nov. 12—Jackson N.W.	away

Our reading of the news of the day leads us to believe there may be unsuspected ways of killing people.

your week ahead

BY DR. A.W. DAMIS

Forecast Period: October 4 to October 11

ARIES Mar. 21 - Apr. 19	There's a change of plans and some drastic actions that might be undertaken by your sign. Most important, be careful of forming new alliances.
TAURUS Apr. 20 - May 20	According to your chart, you have been placing too much faith and trust in someone you know to be unreliable.
GEMINI May 21 - June 20	It seems as though you are inclined to settle for a lot of "lip service." Apparently, a member of the opposite sex has inflated you with "philosophies."
MOONCHILD June 21 - July 22	Many persons under your sign have reached the point when they can no longer avoid a chronic problem. It's showdown time for many Moonchildren.
LEO July 23 - Aug. 22	Whether or not you like it, it is beside the point. This week, it's advisable that you compromise and give ground.
VIRGO Aug. 23 - Sept. 22	Planetary configurations point out your tendency to "play games" with a superior or someone in authority—watch your step!
LIBRA Sept. 23 - Oct. 22	The planet Venus has thrown you in high gear as far as a member of the opposite sex is concerned.
SCORPIO Oct. 23 - Nov. 21	Look for a friend or associate to seek your help to solve their problems in the romance department.
SAGITTARIUS Nov. 22 - Dec. 21	Get rich schemes and material gains crisscross your chart. What might appear as a stupid move will parlay into good things.
CAPRICORN Dec. 22 - Jan. 19	It seems as though you, unknowingly, have become too critical of an associate. Take care, explosive emotional undercurrents are beginning to develop.
AQUARIUS Jan. 20 - Feb. 18	Your indifferent attitude is beginning to develop into a problem that might cause you to lose a close friend.
PISCES Feb. 19 - Mar. 20	Stand by for a sudden change of plans. In other words, see to it that you can take an alternate course with any situation in which you have committed yourself.

Crop Insurance Expansion For 1972 on Limited Basis

Expansion of the USDA's Federal All-Risk Crop Insurance will be limited for 1972, according to Jesse W. Bishop, area sales director, in some counties prohibited.

Corn protection was limited in every county in 1971. For 1972 limitations in some counties provide for no increase in protection. Participation in the self-help farm program will be limited to only maintaining the 1971 participation.

4-H Dog Obedience Club Organizing

The first meeting of the Washtenaw county 4-H El Poocho Dog Obedience club will take place at the Rural Activities Center on Saline-Ann Arbor Rd. at 8 p.m., Tuesday, Oct. 5.

Young dog owners between the ages of 9 and 18 are invited to attend the meeting and join one of the dog obedience groups which will be formed that evening.

In order to participate, your dog must be six months of age or older, be licensed and have all its shots up-to-date. Do not bring dogs to the first meeting, however.

Leaders for this 4-H program are: Mrs. Bev Bater, Whitmore Lake area; Mrs. Gwen Bourn, 761-8206, Dexter area; Mrs. Sally Lynn, 426-2771, Manchester area; Mrs. Gretta Staebler, 663-2118, Ann Arbor area.

Bishop also pointed out that any policyholder having a loss on corn or soybeans must report this loss to the office for their county as soon as harvest is complete on any unit or by December 10, whichever is earliest.

FCIC fieldmen are taking applications on a first come, first insured basis.

Sept. 30 is the final date for wheat growers to get protection on their 1971 wheat.

Any interested farmers in this area are asked to contact the district office at: R. R. 5, W. Chicago Rd., Coldwater 49036.

For further information on this release contact your county office or: Federal Crop Insurance, Room 480, 325 W. Adams St., Springfield, Ill. 62704. Phone (217) 625-4087.

St. Louis School Boys Tour Plant At Chelsea Milling

The students, priests and teachers of the St. Louis School for Exceptional Boys were given the red carpet treatment during their tour of Chelsea Milling Co., maker of Jiffy Mixes last Thursday.

In addition to their walk through the Chelsea Milling plant, all the boys were given refreshments, boxes of brownie mix, and recipe books.

Friday was brownie day at the school, as the boys used what they had been given with dispatch.

On Saturday, "The Brothers and Sisters," a country and western band from Chelsea, comprised of Mary Louise Young, Lisa Young, Chuck Foytick and Rick Foytick performed at the school. St. Louis students danced and sang along to favorites performed by the group.

Accompanying the band were their parents, Mr. and Mrs. Charles Young and Mr. and Mrs. Danny Foytick and several other Chelsea teens.

Three Sisters of the Holy Family from Windsor, Ont., were also here for the week-end, as were Sister Angelica and Sister Renata who are spending a month's vacation at the school before returning to their work as teachers in Guatemala. Sister Angelica worked at the St. Louis school for five years before being transferred to Guatemala last November.

This week-end the boys will go home to see their parents, as they do every other week-end.

UNUSUAL GIFT

Tucson, Ariz.—Captain Stanley Helms, head of a Salvation Army thrift store, called police when he opened an attaché case given to the store recently. Police took a sniff and assured Helms it contained marijuana worth about \$2,000 on the retail market.

1000

Now Available at
The Chelsea Standard

Letters to the Editor

Huron Clinton Metropolitan Park Authority
600 Woodward
Detroit, Michigan

Gentlemen,

I hope I can, in these lines, convey the feeling of many of us with regard to the proposed Mill Creek Park in Lima township, Washtenaw county, Michigan. We believe it is the wrong project in the wrong place with the wrong objectives. It warrants, and should receive, a far closer scrutiny from your organization that it has received to date.

Initially, you choose to locate this proposed facility on some of the finest farm land in southern Michigan, if not the entire Middle West. It was settled by dedicated homesteaders from the East who have nurtured it to its present high degree of productivity. For these pioneers and their successors it has been the dedication of lifetimes to the pursuit of good farming and husbandry. It has contributed to the general welfare and created the community of which we are proud. To needlessly destroy this when less valuable and productive land is available and is, indeed, in public ownership at the present time, is irresponsible.

Dog Control Officers Give Nine Tickets

Despite a warning by Chelsea Police Chief George Meranuck, many Chelsea dog owners are still allowing their pets to run at large in violation of a village ordinance, and more complaints than ever are being received by Chelsea police.

To deal with the problem, Deputy Stuart Wilson and Rex Emerson of the Washtenaw County Sheriff's Department Dog Control Division are making increased patrols in the Chelsea area.

According to Deputy Wilson, the two have issued nine tickets to Chelsea dog owners since last Friday. The tickets all not three offenses: allowing a dog to run at large, having an unlicensed dog, and having a dog without rabies shots.

When the deputies pick up a dog, they attempt to locate the owner—usually to return the dog and write a ticket. If the owner cannot be found, the dog is turned over to the Washtenaw County Humane Society Animal Shelter where it is held for five days before either being put up for adoption or being destroyed.

"We will be keeping a close eye on Chelsea," Deputy Wilson said. "We realize that there is a real, and increasing problem here."

CUB SCOUT NEWS

PACK 415—

Cubs and Webelos of Pack 415 ended a busy and fun-filled summer by attending a Tiger baseball game on Saturday, Sept. 25. Some of the other activities over the summer included a baseball game of their own and hot dog roast in June. In July the Webelos had an overnight campout and the rest of the Cubs and families enjoyed a hike and pot-luck the following day. A pancake breakfast was attended by 60 Cubs and their families at Park Lyndon in August.

The September Pack meeting was opened by the Webelos with the flag ceremony. Newcomers who have transferred from Lincoln Park to Pack 415 are Dale Sine, Webelo, Ted Sine, Ricky Sine, and Michael Brainerd were welcomed into the group. Gerry Ratzloff, Todd Sprague, Steve Adkins, Billy Freeman, and Robbie Shears all received their Bobcat pins for becoming new Cubs.

Kelly Krieger and John Drieman became Webelos and were welcomed by Gary Packard, Webelo leader.

Mark Shippy and Gary Packard left Webelos and were initiated as new Boy Scouts by Cecil Clouse, their new leader, Scoutmaster of Pack 420.

Alice Atkinson, the den mother of Den 1, received her eight-year service star.

The meeting was closed by a candlelight ceremony performed by the Webelos.

Bad Seed

Michigan State University crop scientists report that Michigan farmers lose about \$25 million each year by buying bad seed.

The waste of public funds in the purchase and destruction of the many fine, valuable homes in the area involved is cause for all to look again at the project. Is there any justification for this excessive expenditure of funds which all of us as taxpayers must supply and contribute? With the many social ills which now exist and the numerous unfilled needs they represent, how can we propose the investment of millions of tax dollars in this project?

Will it serve the people who most need new recreational and "open area" opportunities? It is too remote from Detroit and its central city. The economically depressed cannot afford the trip. The results will be the usual ones. Those who are in need cannot have those who do have it to do need it. We suggest using land now publicly owned for the park and, if you will, use the savings in making a meaningful contribution toward the solution of some of the pressing problems within the scope of operation of Huron Clinton Metropolitan Park Authority.

It must be pointed out also that what you propose to do is not limited to the land you wish to acquire, serious as that is. You propose to disrupt the present balance of nature and the elements in the area by altering water tables, drainage, natural springs and the general water flow. You would not only take valuable land but would destroy or, at best impair, the productivity of that which you leave.

Your approach to the environment is inconsistent. You say you wish to preserve it, but to do so you destroy it. You cannot even predict with any reasonable degree of accuracy the effect of your tampering on that which we have worked so hard to develop and bring to its present productive state. Indeed, the maps and charts you use do not appear to have been updated and you cannot assure us of their accuracy. You trifle with the things that are close to the center of our life and reject every reasonable suggestion and alternative with a calous disregard for our sincere concerns.

How do you propose to assure us that that which you leave will be usable? You dam up streams, you open and expand springs, and you alter water flow, have no concern over its effect. The seepage and evaporation from a 650-acre shallow lake you plan will leave no water to go over the dam down stream. You destroy drainage and water rights which have been negotiated by area land owners and are of record over the past 45 years.

It is easy to hide behind your idea of the "public welfare" but you do not need to explain to us what is in the public interest as we have been serving it before the Huron Clinton Metropolitan Park Authority was created by us taxpayers. We do not desire to frustrate the public good—we wish to serve it and we wish to see that you also serve it. We, too, are a part of that public. We, too, pay the bill. And, we, too, will be heard.

We ask you to take another long, perceptive look at what you propose to do in Lima township. Is it designed to meet the problem? Is it fair? Is the burden being borne equitably? Is this park, like the trip, necessary and, if so, are you on the right road?

We appeal to what we believe is your desire to act responsibly in this matter. We have confidence that you will recognize our sincere desire to point out to you that which concerns us and ought to concern every taxpayer. Our approach has been, and is, conciliatory and we want and hope it remains so.

We believe you can serve the public welfare without destroying us and much of which has been the result of a lifetime of work and love and care and pride.

We urge you to reconsider.
Very truly yours,
Sylvester J. Weber.

Tape Deck Stolen From Auto Parked At High School Lot

A tape deck and two speakers valued at \$100 were stolen Monday, Sept. 20 from a car owned by Orville Harris, 810 McKinley Rd.

The car had been left in the Chelsea High school parking lot by Harris' son Derrick, 17, while he attended class.

According to Harris, he had locked the car before leaving it at approximately noon. When he returned at 3:20 p.m., he discovered that the passenger side window had been rolled down, the door unlocked, and the tape deck and speakers stolen.

Chelsea police are investigating.

Soil Conservation District's Report Best in Michigan

The annual report of the Washtenaw County Soil Conservation District (SCD) has won an award for being the best in Michigan in the printed class.

The first-place award was presented to the SCD at special ceremonies held in Marquette during the summer meeting of Michigan Soil Conservation Districts, Inc. The contest was sponsored by the Cheeney Limestone Co.

The SCD's report continued conservation highlights for the year, and a progress report on conservation work in the county to date.

Members of the local board of directors include Stephen Bristle of Manchester, chairman; William Nixon of Dexter, vice-chairman; William Fishbeck of Ann Arbor, secretary; Orrin Girbach of Saline, treasurer; and Archie Bradbury of Dexter.

"I REMEMBER" BY THE OLD TIMER

From Mildred M. Smith, Bethany, Mo.: We all like to remember the days of long ago. Sometimes I wonder how people ever finished their work, but they seemed to have more time to really live than we do today with all our modern conveniences.

I remember butchering hogs was different than it is today on the farm. Most hogs are skinned now in this part of the country. In the old days they were scalded in a barrel of hot water, then scraped leaving the rind on.

The meat was cut up. Hams were sugar cured with a mixture of salt, brown sugar, pepper and salt. The flavor was delicious! Sausage was made by grinding the trimmings and shoulder meat, then seasoned, made into patties and "fried down"—meaning fried until done, then packed into glass jars, hot fat poured over, and then sealed.

My, how good it tasted!

We have found out that even a cold war costs money, and lots of it.

Cornerstone Ceremony Set For Sunday

The Cornerstone Ceremony for the new building of Our Savior Lutheran church, 1615 S. Main St., Chelsea, will be held at 3 p.m. Sunday, Oct. 3. The Rev. William H. Keller, pastor of the two-year-old congregation, will officiate. The Rev. Norbert Mueller, pastor of St. Paul's Lutheran church in Ann Arbor will be the guest speaker. The public is invited.

Construction on the new building has resumed after a six-week delay caused by the late arrival of laminated wood beams which were shipped from Oregon. Now that the beams have arrived, completion of the building is estimated to take eight to 10 weeks.

New Lutheran Church Engages Their First Pastor

The Rev. William H. Keller of Chelsea announced to the congregation of Our Savior Lutheran church in Chelsea this week that he will accept the call extended to him by that congregation to become its first pastor.

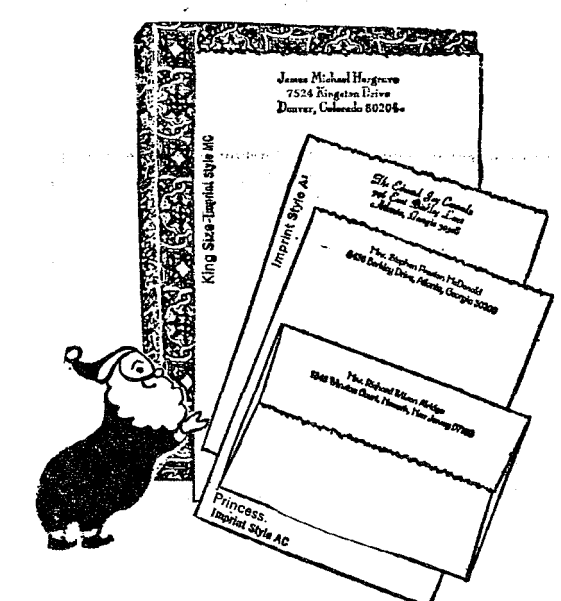
The Rev. Keller has been serving the congregation as a missionary for the past two years since its organization under the Mission Board of the Michigan District of the Lutheran Church, Missouri Synod.

The congregation which was gathered and organized when the Rev. Keller began serving in the area has reached the point of being able to call its own pastor. The congregation chose to call him to fill that position.

A service of installation is being planned for the latter part of October, after which the Rev. Keller will officially assume pastoral duties of the congregation.

Not every non-profit corporation is being operated for the benefit of a beneficiary.

The Chelsea Standard



Pre-Christmas Gift Sale

Rytex Deckle Edge Vellum
Personalized Stationery

Save 50% **\$4.95** (regularly \$9.90)

150 Princess sheets & 100 envelopes... or 100 King size sheets & 100 envelopes

This way you can give a lot of goodness — it's high quality paper; a lot of style; a lot of usefulness. But most of all you give a gift that says, "I had just you in mind." Because Rytex is custom-made for the individual. Makes an ideal gift for men or women — don't forget the men on your list!

Marvelously deckled paper in white, blue, or grey. Smartly imprinted in blue or grey ink in choice of imprint styles shown. Princess or King size sheets—the choice is yours. You can't go wrong. Because any Rytex Personalized stationery style you choose is correct.

Beautifully Gift Boxed.

MAIL ORDER COUPON

THE CHELSEA STANDARD
CHELSEA MICH. 48118

DECKLE EDGE VELLUM...boxes at sale price of \$4.95 per box.

SPECIAL BONUS... (check) include 50 matching, unprinted, sheets for only \$1.00 more....

CHECK ☐ Princess White (9400) ☐ King White (9100)
 YOUR ☐ Princess Blue (9450) ☐ King Blue (9150)
 CHOICE ☐ Princess Grey (9460) ☐ King Grey (9160)

Ink: ☐ Grey Ink ☐ Blue Ink

☐ Imprint MC ☐ Imprint AL ☐ Imprint AR

Imprint Name _____
 Street _____
 City _____ State _____ Zip _____
 Ordered by: _____
 Street _____ State _____ Zip _____
 City _____

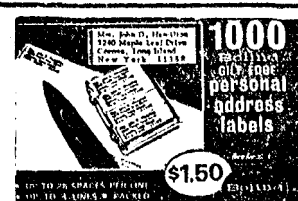
☐ Charge ☐ Payment enclosed. (Sorry, No C.O.D.'s)
 Please include Sales Tax.



INVITATIONS or ANNOUNCEMENTS...

Let us provide you with the very finest printed or engraved invitations and announcements. Make certain that your wedding stationery is of top quality and conforms to correct social requirements. We can advise you on these important details.

THE CHELSEA STANDARD
Commercial Printing Department



Now Available at
The Chelsea Standard

SING-ALONG MUSIC at INVERNESS INN

NORTH LAKE
Saturday Nights - 9:30 p.m. to 1:30 a.m.

Music By
LEO WARBOY and the Chippewa Cowboys

YOUR FAVORITE SANDWICHES
SHRIMP, CHICKEN & FISH DINNERS
BEER - WINE - LIQUOR



Mrs. Gordon John Beeman

Rebecca Taylor, Gordon Beeman Are Married Saturday Evening

Rebecca Taylor became the bride of Gordon John Beeman, 35, of Chelsea, Sept. 25 in an evening ceremony performed at the Methodist church by the Rev. H. Dickins.

Rebecca is the daughter of Mr. and Mrs. Jack A. Taylor, 8579 Rd. Rd., Gregory. Gordon is the son of Mr. and Mrs. Wilbur H. Dickins, 15836 Waterloo Rd.

For her wedding, the bride chose a white tulle gown with long sheer sleeves and a slightly flared skirt. She carried a bouquet of three orange carnations.

For her daughter's wedding, Mrs. Taylor chose a white tulle gown with long sheer sleeves and a slightly flared skirt. She carried a bouquet of three orange carnations.

Best man was Ken Carty, a cousin of the bridegroom. Ushers were Phil Boham, Ken Blaess of East Lansing, and John and Edward Beeman, cousins of the bridegroom.

Following the wedding, a reception was held at the Inverness Country Club. After a week-long wedding trip to the Caradoc Creek Ranch in Atlanta, Mich., the newlyweds will make their home in Alexandria, Va.

Bridesmaids, Miss Judy Gran, and Miss Darlene Beeman, cousin of the bridegroom, wore yellow dresses styled like that of the matron of honor. They wore yellow satin bow headpieces, and carried bouquets of three orange carnations.

For her daughter's wedding, Mrs. Taylor chose a white tulle gown with long sheer sleeves and a slightly flared skirt. She carried a bouquet of three orange carnations.

Mrs. Beeman wore a white tulle gown with long sheer sleeves and a slightly flared skirt. She carried a bouquet of three orange carnations.

Best man was Ken Carty, a cousin of the bridegroom. Ushers were Phil Boham, Ken Blaess of East Lansing, and John and Edward Beeman, cousins of the bridegroom.

Following the wedding, a reception was held at the Inverness Country Club. After a week-long wedding trip to the Caradoc Creek Ranch in Atlanta, Mich., the newlyweds will make their home in Alexandria, Va.

Turkey is being now for about the same price it did 20 years ago.

Nancy Frisbie Is Bride of Keith Wenger

Nancy Ann Frisbie and Keith Wenger were wed at St. Francis Catholic church by the Rev. Francis Wahowiak Saturday, Sept. 18.

Nancy is the daughter of Mr. and Mrs. Jerald Frisbie, 519 Madison. Keith is the son of Mr. and Mrs. Neil K. Wenger, 2709 Radcliffe.

For her wedding, the bride chose a white tulle gown with long sheer sleeves and a slightly flared skirt. She carried a bouquet of three orange carnations.

Matron of honor Mrs. Glen Johnston of Ann Arbor, a sister of the bride, was dressed in a dark lavender gown featuring a high mandarin collar and puffed sleeves. She carried a bouquet of white tea roses.

Bridesmaids, Susan and Cindy Frisbie, sisters of the bride, and Valerie Wenger, sister of the bridegroom, were dressed in pale lavender gowns styled like that of the matron of honor. They also carried bouquets of two tone lavender asters.

For her daughter's wedding, Mrs. Frisbie wore a two-tone beige A-line dress with brown suede accessories. Mrs. Wenger chose a cranberry and green suit. Both mothers had orchid corsages.

Best man was Daniel Tomshany of Dexter. Ushers were Glen Johnston, Paul Wenger and Robert Kurtz, all of Ann Arbor.

Following the wedding ceremony, a reception was held at the Geddes Lake Townhouses in Ann Arbor.

Following a week-long wedding trip to northern Michigan, the newlyweds will make their home in Ann Arbor.



ENGAGED: Mr. and Mrs. William D. Wade, 47 Butternut Ct., announce the engagement of their daughter, Janna Lee, to Darrell Williams, son of Mr. and Mrs. Forest Williams, 4111 Morton Rd., Stockbridge. Janna is a 1970 graduate of Chelsea High School, and is employed by Chelsea Dairy Queen. Darrell is a 1969 graduate of Stockbridge High School, and is employed by Dana Corp. A January wedding is being planned.

Club and Social Activities

MODERN MOTHERS

Fourteen members and eight guests of the Modern Mothers Club met Tuesday night to tour the Mott Children's Hospital in Ann Arbor.

Following the tour, conducted by Mrs. Eve McKenzie, the club was shown slides of the hospital routine, and the school facilities. Mott has for children up to 19 years of age.

Modern Mothers will meet next Oct. 12 at the home of Mrs. Lenore Matloff.

NEVER REST FARM BUREAU

Seven couples were present for the September meeting of the Never Rest Farm Bureau held last week at the home of Mr. and Mrs. Reuben Lesser.

Fenny Lair will replace Barb Troiz on the women's committee. Barb Troiz reminded all the women about the sewing and crafts contest. The Bob Strong's have been invited to join the group, and will fill the vacancy left by the Lloyd Graus who have resigned.

A program planning committee of Bob Heller, Penny Lair, Roger Troiz and Reuben Lesser was established. A short discussion on marketing was held. Following the meeting, members played cards.

The Oct. 15 meeting will be held at the home of Mr. and Mrs. Earl Heller at 8 p.m.

ROGERS CORNERS EXTENSION Mrs. Raymond Manzel and Mrs. Frank Cianciolo were hostesses for the Rogers Corners Extension Study Group meeting held Tuesday, Sept. 21 at the Manzel home.

Fourteen members and four guests responded to the roll call topic, "Highlights of Your Summer." Two new members, Mrs. Thomas Johnson and Mrs. John Koopale joined the group. Plans were discussed for the coming year. Joyce Eiseaman was appointed secretary-treasurer to replace Mrs. Walter Soltysiak who resigned.

Secret pals from last year were revealed and new names for next year were drawn. Refreshments were served by the hostesses.

The Christmas Idea Open House will be held Oct. 25 and 26. At the next meeting members will discuss ideas for exhibits at the event.

Mrs. Walter Wolfgang and Mrs. Elmer Bristle will present a lesson on "Elect Fruits and Vegetables" at the Oct. 19 meeting. Roll call topic for that meeting will be "Think Something New from Something Old." The meeting place for the Oct. 19 meeting will be announced.

SALTY? A cubic mile of sea water contains 128,000,000 tons of salt.

Rebekah Lodge Will Collect Old Eye Glasses

At the Sept. 21 meeting of the Chelsea Rebekah Lodge, 16 members were present.

Mrs. Mary Ann Coltre was appointed liaison officer for community services.

The lodge voted to collect old eye glasses. Mrs. Loydell Keezer is co-chairman of the project. October District No. 12 visitations of officers are as follows: Oct. 1 at Home City No. 228, Jackson; Oct. 13 at Vandercook Lake No. 431; and Oct. 21 at Martha Lodge No. 2 in Jackson. Members are urged to make arrangements to attend.

The birthday song was sung for all those having September birthdays, including Mrs. Flora Weber, Mrs. Mary Ann Coltre, Ruth Perkins, Kathleen Bernath and Lillian Sanderson.

A candlelight service was held for all members and servicemen everywhere.

Committee for the evening was Mrs. Elsie Hinz and Hazel Dvorak. The next regular meeting will be held Oct. 5 at 8 p.m.

Mrs. Marion Dietle, a former Chelsea resident and member of the lodge who has returned to Michigan from Illinois, and her mother, Mrs. Viola Slane, will hostess the Oct. 14 meeting.

Jaycee Auxiliary Members Plan Help at Barbecue

The Sept. 21 meeting of the Chelsea Jaycee Auxiliary was held at the home of Auxiliary president Mrs. Walter Brown with all members and three guests present.

Miss Robin Verway, Auxiliary fair queen candidate was introduced to the members who presented a gift of appreciation to her.

Mrs. Updegraff gave a balloon ascension contest report, and presented winner Kris Steinaway with the first-place award.

Mrs. Doug Robeson, chairman of Medicenter Bingo, asked that members bring small gift items for the project which will continue for the balance of the year.

Mrs. Joe Verway, chairman of the chicken barbecue assistance committee, asked all members to sign for a work time, stressing the need for 100 percent participation.

Darlene Eder, chairman of stationery and calendar sales gave each member her supply to be sold.

The membership approved a project to collect items for the Adrian Girls Training School. Members will collect clothing, personal items, and craft materials. The meeting adjourned with Jaycee president David Rowe acting as auctioneer for a bidding auction.

FAMILY AFFAIR

If every family in the United States owned its own farm, each of us would be living on 27.5 acres and caring for six acres of crops. Most of our acreage would be in pasture, woodland, or fallow ground.

We've always felt that the man who looks at his work doesn't need a vacation.

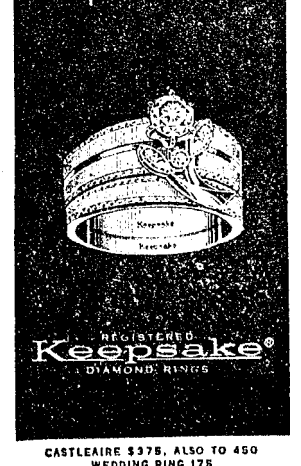
VIVIANE WOODARD

COSMETICS

475-8785

Dorothy Ortring, Director

May We Propose



The ring that expresses love in a very special way... a perfect diamond, guaranteed.

WINANS JEWELRY

Rings Enlarged To Show Detail. Trade-Mark Reg.



A FISHY STORY: All the big ones got away again last Saturday, as boys and Jaycees participating in a Jaycee sponsored fishing trip to North Lake were forced by fish and game laws to return most of their catch to the lake. Fishing through the rain were (left to right) front row: Duane West, Robert Annabell, Ricky Eder, Michael Payne, Tom Gilbraith, Ken Lindstrom, Rod Neeley and Jeff Eder. In back are: Dick Loring, project chairman, Mitch Zink, Chuck Fredley, store proprietor, Doug Robeson and Dave Rowe. Fredley furnished boats, bait and several pieces of tackle without charge to the group.

Boys Without Fathers, Jaycees Enjoy Fishing Trip Despite Rain

Despite rainy, cold weather, and a catch consisting mainly of fish too small to keep, the Jaycee fishing trip for boys with absent fathers held last Saturday was "a large scale success."

Eight boys and four Jaycees spent the day huddled in boats donated by Chuck Fredley, proprietor of Elmer's Place, fishing in spite of the drizzle that fell throughout much of the day. More than 60 fish were caught, most of them small fry that had to be thrown back. The largest fish of the day, a nine-inch bass, was caught by Mike Payne.

According to Jaycee President Dave Rowe, the boys' response to the fishing expedition, and their desire to do other things with the Jaycees, will probably result in a similar project later in the fall.

Rowe said too that the fishing trip showed that there is no need for a Big Brother type program in Chelsea at this time.

Although the club has not yet officially approved another excursion similar to the one held Saturday, Rowe said that it will probably sponsor a trip to a football or hockey game later this fall.

SCHOOL LUNCH MENU

Week of Oct. 4-8

Monday, Oct. 4—Beef and vegetables covered with snow, fall day salad, bread and butter, applesauce, cookie, milk.

Tuesday, Oct. 5—Big John bean on hamburger bun, soup of the day, celery with peanut butter, hot apple goodies, milk.

Wednesday, Oct. 6—Wiener in a bun, trimmings, vegetable, potato chips, pudding, cookie, milk.

Thursday, Oct. 7—Creamed turkey, mashed potatoes, buttered corn, biscuits, butter, fruit, milk.

Friday, Oct. 8—Fish on a bun, tartar sauce, green beans, tater tots, catsup, molasses cookie, fruit, milk.

Magic Mirror Beauty Salon

Open Monday thru Friday
9 a.m. to 9 p.m.
Saturday, 8 a.m. to 3 p.m.

PHONE 665-0816

K. of G.

FASHION SHOW

STRETCH & SEW

THURSDAY, OCT. 7

8:00 p.m.

ST. MARY'S SCHOOL GYM

400 Congdon St., Chelsea

Admission: 1 Boysville Ticket

VILLAGE BEAUTY SALON

LORETTA - CINDY - EULA
MARGE - ARLENE - SARAH

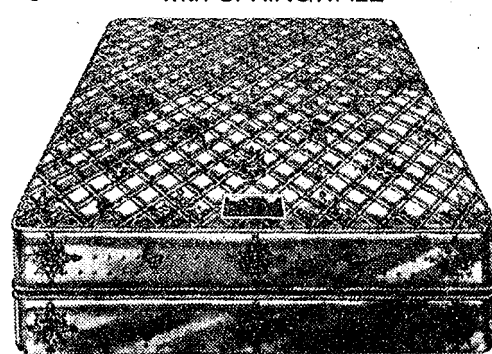
107 N. MAIN PHONE 475-5421

We are happy to have Sarah Steele back on our staff. Give her a call, she'll be glad to see you again.

OPEN MONDAY THRU SATURDAY
Evenings By Appointment

**YOU HAVE ONLY ONE BODY.
TREAT IT KINDLY.**

Chiropractic
with SPRINGWALL®



This is the only matched set of bedding made to the specifications of the Posture Committee of the American Chiropractic Association to help maintain correct sleep posture. Chiropractic...probably the best mattress and box spring ever made.

24 PATENTED SIDE SUPPORTS END EDGE SAG! mattress or boxspring \$89.95 twin or full, Queensize set...\$249.95 Kingsize set...\$359.95

MERKEL HOME FURNISHINGS

Open Mon. & Fri. 'til 9. Phone 475-8621

CHELSEA JAYCEES CHICKEN BARBECUE

SUNDAY, OCT. 10

Corner of M-52 and Old US-12, Chelsea
Serving Starts at 11 a.m.

2,500 Dinners Will Be Served
PUBLIC INVITED

\$1.75 per serving

— Sponsored By —

CHELSEA JAYCEES

BOB UPDEGRAFF, Chairman

Community Calendar

Thursday, Oct. 7: Limaners at the home of Mabel Lounsbury, 12:30 p.m.

Wide Awake 4-H club meeting, at Straub's Saturday, Oct. 2 at 1:30 p.m.

Past Matrons pot-luck luncheon, 12:30 p.m., Oct. 7. Important to attend.

Chelsea Fair Board annual meeting, Oct. 5 at 8 p.m. at the Fair Services Center, Public invited.

Annual meeting and election of officers for Olive Chapter 108, Wednesday, Oct. 6, 7:30 p.m. at the Masonic Hall.

Toy Party, by House of Lloyd, Oct. 7, 7:30 p.m. at North Lake United Methodist church. Do your Christmas shopping now.

Boy Scout Troop 476 paper drive next week. To arrange in advance for a pick-up during the week or Saturday, Oct. 2, call Vern Hiltz, 475-7716. Willis Heydlauff, 479-7191, or Charles Stoner, 475-2890.

American Legion and Auxiliary hospital equipment available by contacting Loren Keezer at 475-2766 or 475-3431.

TOPS Club at library, Wednesday afternoon group, 12:30 p.m. For information call 426-4549. Tuesday evening group, 8 p.m. For information call 475-8952.

Sewing every Tuesday afternoon at Korner House.

Volunteer orientation classes for adults will be given Oct. 4, 5, and 6 in the morning at St. Joseph Mercy Hospital, Ann Arbor. Men and women, including retirees, who would like to serve others through volunteering are welcome. Call the Volunteer Office at 665-4141 to register.

Inquiries regarding the Chelsea blood bank may be directed to Harold Jones in the event that Mrs. Dudley Holmes is unavailable, or to Mrs. Pauline McKenna, American Red Cross in Ann Arbor, 971-5300.

Civil Defense officials remind: "Tornado watch" means that weather conditions indicate a tornado may develop. "Tornado warning" means that an actual tornado funnel has been sighted. Information is available at the Chelsea Municipal Building or by contacting Elwyn Beach, civil defense director, 479-6031.

Charcoal broiled chicken dinner, Saturday, Oct. 9 and Sunday, Oct. 10. Serving from 11 a.m. to 5:30 p.m. each day. Eat in the big tent and enjoy 20 different colors or carry-outs available. Corner of Dexter-Pinckney Rd. and North Territorial Rd. (4 miles northwest of Dexter or 4 miles southeast of Pinckney). Rain or shine. Sponsored by Dexter Knights of Columbus.



Association for Children with Social and Learning Difficulties (AOSLD) general meeting, Oct. 7, 8 p.m. at Zion Lutheran church, 1501 W. Liberty, Ann Arbor. Any one interested phone 781-8182 between 9 a.m. and 12 p.m.

K. of C. annual Euchre Tournament beginning Thursday, Oct. 7, 7:30 p.m. sharp, K. of C. Hall, Dexter. Season tickets, \$10, nightly tickets \$1.25 purchased at the door. Prizes, refreshments. Public invited.

American Legion Auxiliary Tuesday, Oct. 5, 8 p.m. Legion Home, Cavanaugh Lake.

BIRTHS

A son, Fred Adelbert, III, Sept. 21, to Mr. and Mrs. Fred Worden.

A daughter, Sarah Lynn, Sept. 21, to Mr. and Mrs. Kenneth Bollinger of Dexter. Mrs. Bollinger is the former Linda Wahl, daughter of Mr. and Mrs. Howard Wahl of Grass Lake. Sarah's paternal grandparents are Mr. and Mrs. Lee Bollinger of Chelsea.

A son, Dennis Walter, Sept. 21, to Mr. and Mrs. Marvin Fischer of Dexter. Dennis' paternal grandparents are Mr. and Mrs. Harvey Fischer of Dexter. Maternal grandparents are Mr. and Mrs. Forrest Goll of Ann Arbor.

A son, James Patrick, Sept. 17, to Mr. and Mrs. James A. Collins, Westland. Mrs. Collins is the former Carol Dancer, daughter of Mr. and Mrs. Donald Dancer. Paternal grandparents are Mr. and Mrs. William Collins.

A son, Mark Richard, Sept. 21, to Mr. and Mrs. David Luick. Mark's maternal grandparents are Mr. and Mrs. K. R. McMannis. Paternal grandparents are Mr. and Mrs. Leigh Luick.

A daughter, Cathy Lynn, Sept. 25, to Mr. and Mrs. Billy G. Fuels.

85th Birthday Observed

John Myers, 412 Wilkinson St., celebrated his 85th birthday Sunday, Sept. 26. Seven of the Myers' nine children, seven grandchildren and 10 great-grandchildren were present for the occasion. More than 40 family members, friends and neighbors attended the party. The Myerses came to Chelsea in 1916, and have lived at their present address for the past 50 years. According to Mrs. Myers, Mr. Myers is in very good health, and even planted a vegetable garden this year.

Byron H. Fortman, formerly of Dexter and Chelsea, is a patient at Whitehall Convalescent Home at Ypsilanti.

DEATHS

Mrs. John Fletcher Dies Suddenly Saturday At Her Home on East St.

Mrs. Ruth D. Fletcher, 116 East St., died suddenly at her home, Sept. 25.

Mrs. Fletcher was born April 22, 1897 at Olean, N. Y., the daughter of George and Grace Fuller Bover.

She married John Fletcher at Little Valley N. Y. Jan. 1, 1921. He died Dec. 7 1955. He had been well known in the banking business in Chelsea for many years.

Mrs. Fletcher was a member of the Chelsea Methodist church.

She is survived by one son, John E. Fletcher of New Canaan, Conn.; one daughter, Mrs. Keith (Betty) McKenney of Toledo, O.; three brothers, George Bover, Howard Bover, Lawrence Bover, all of Randolph N. Y. and one sister Mrs. Esther (Schultz) also of Randolph. Five grandchildren also survive.

Funeral services were held Tuesday, Sept. 28, 2:30 p.m. at the Staffan Funeral Home, with the Rev. Clive H. Dickens officiating. Burial followed in Oak Grove Cemetery.

Cross Country Team Scores First Victory

Chelsea High school's new cross country team scored their first win of the season last Tuesday as they defeated Stockbridge on Stockbridge territory 24 to 31.

Leading the way for Chelsea was senior Dave Buxton who finished the two and one-half mile course in 15:35 to take first place in the meet. Dan Hoover, another senior runner, placed second for Chelsea with a course time of 15:52.

According to cross country coach Pat Clarke who had expected strong performances from Buxton and Hoover, the runners who made the difference this time were Jim McGinn, Howard Schenk and Jon Schenk who each cut approximately two minutes off their previous times to take fourth, seventh and 10th places, respectively.

It was a different story on Thursday, however, as a fairly strong South Lyon team, running on home ground, swept the first five places to shut out Chelsea, 15 to 43.

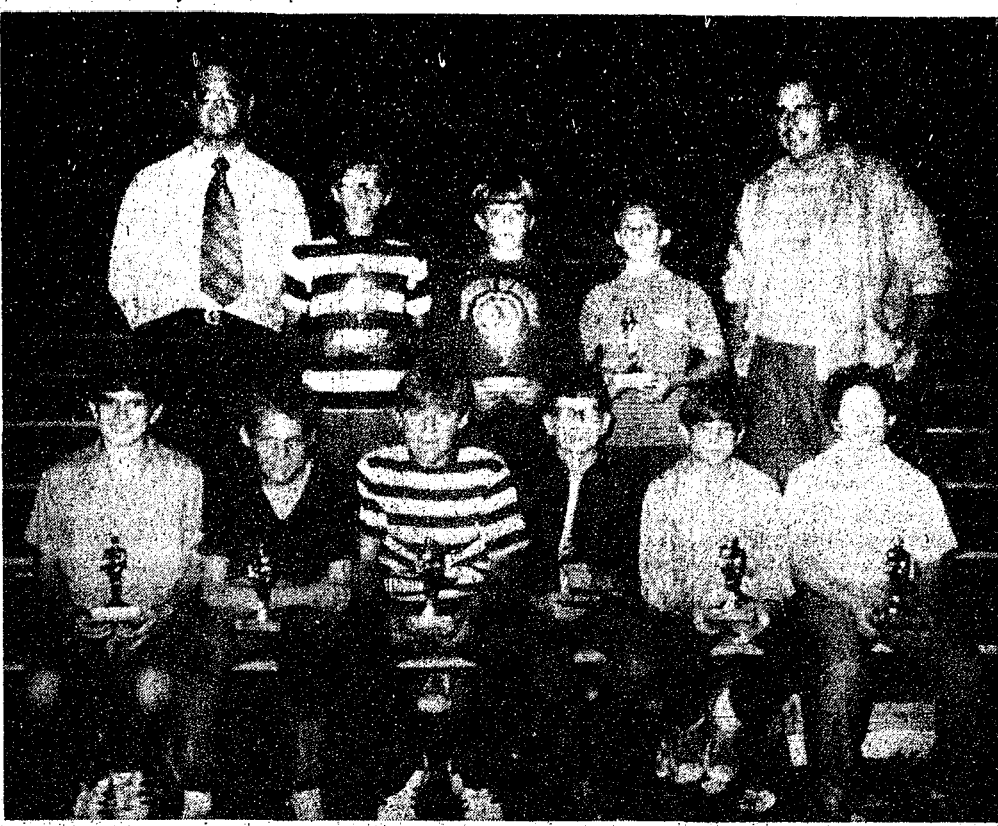
South Lyon's strongest runner, Chuck Wicks, set a South Lyon course record Thursday with a 14:39 finish. The other South Lyon runners placing in the top five all finished at around 10 minutes Clarke said.

Chelsea runners Dave Buxton and Dan Hoover finished sixth and seventh, a disappointing surprise for Clarke, who had hoped for a stronger showing from his two front runners.

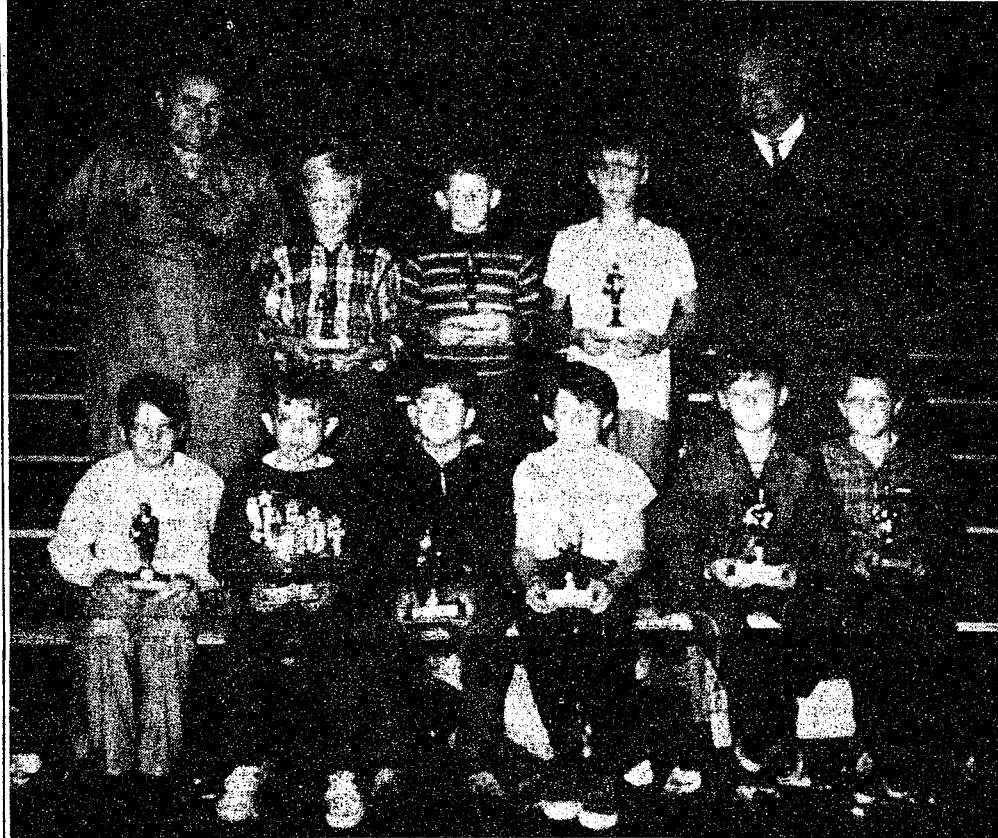
It was evident in the meet, Clarke said, that Chelsea is still handicapped by its lack of practice caused by the late organization of the team. "South Lyon had had a lot more practice than we had," Clarke said, "which is why they beat us so badly. They may still beat us next time," he added, "but the score will be a lot closer."

Chelsea meets Jackson Northwest in Jackson this afternoon—the last away meet before Chelsea opens at home. They will run here against Dexter Tuesday, Oct. 5 and again against South Lyon on Thursday, Oct. 7. Home meets start at 4 p.m. and begin and end at the Chelsea High school football field.

Michigan produces enough beef and veal for every Michigan citizen to have 58 pounds per year. Value to producers, about \$115 million.



A GOOD EYE, strong toe, and limber throwing arm won honors for these competitors in the annual Punt, Pass & Kick contest—sponsored by Palmer Ford assisted by the Chelsea Jaycees—held Monday night. Divisions in the competition are arranged by age, so that boys compete only against those in their own age group. Winners in the 13-year-old group are: (left to right) Steve Bowen, 1st; Ron Joseph, 2nd; Robert Joseph, 3rd; in the 12-year-old group: Mark Bowen, 1st; Matt Heydlauff, 2nd; Gordon Evans, 3rd. Back row: Dick Loring, assisting Chelsea Jaycee, and 11-year-old winners Rodney Sweeney, 3rd; John Daniels, 1st; Jeff Powell, 2nd; and Walt Brown, Chelsea Jaycee.



COMPETITION in the Punt, Pass and Kick contest is open to boys between 8 and 13. Winners in the 8-year age group are: (left to right) Eric Headrick, 1st; Ross Stofflet, III, 2nd; Joel Kirchbaum, 3rd; in the 9-year-old group: Daniel McGill, 1st; John Dunn, 2nd; Walter Soltysiak, 3rd. Back row: Lyle Christwell of Palmer Ford; 10-year-old winners Jeffrey Eibler, 1st; James Brown, 2nd; David Stock, 3rd; and Sylvester Wojcicki, announcer for the contest.

More Than 100 Boys Enter Punt, Pass & Kick Contest

More than 100 boys from the Chelsea area between 8 and 13 competed in the 11th annual Punt, Pass & Kick contest held at the Chelsea High school athletic field Monday night.

The contest, which is sponsored locally by Palmer Ford assisted by the Chelsea Jaycees, tests the distance and accuracy with which a boy punts, passes and kicks a football. Boys compete only against those their own age.

Winners of Monday night's contest, by age group are: Eight-year-olds: Eric Headrick, 1st; Ross Stofflet, III, 2nd; Joel Kirchbaum, 3rd. Nine-year-olds: Daniel McGill, 1st; John Dunn, 2nd; Walter Soltysiak, 3rd. Ten-year-olds: Jeffrey Eibler, 1st; James Brown, 2nd; David Stock, 3rd.

Eleven-year-olds: John Daniels, 1st; Jeff Powell, 2nd; Rodney Sweeney, 3rd. Twelve-year-olds: Mark Bowen, 1st; Matt Heydlauff, 2nd; Gordon Evans, 3rd. Thirteen-year-olds: Steven Bowen, 1st; Ron Joseph, 2nd; Robert Joseph, 3rd.

All winners in the competition received trophies, and first-place winners will compete in the zone competition which will be held Oct. 9.

Following the zone competition, there will be district, area and divisional contests before the national finals which will be held during the Super Bowl Game, Jan. 16 in New Orleans.

Of the major vegetables grown commercially, Michigan produced 130 pounds per person last year. Producers received \$53,220,000 in 1970.

Bulldogs Gain Revenge Over Dexter, 16-7

(Continued from page one)

by Ed Koenigter and Bob Wojcicki which wouldn't yield to Dexter's attempts to move the ball out of their own territory.

The touchdown was then scored by Tom Lixey on an 18-yard run. Welton and Brier again hooked up for the two-point conversion.

According to head coach Phil Baris, the Chelsea offense was plagued throughout the night by mistakes, but the defense came back after a slow first half to allow Dexter only 12 yards net rushing in the second half. Defensive players Koenigter and Wojcicki were credited with nine tackles each during the game.

Chelsea will put its two wins on record on the line this Friday as they play Saline in another Southeastern Conference game here at 7:30 p.m.

High School Golf Teams Initiating Fall Schedule

Golf has become a fall sport in Michigan high schools for the first time this year, so Chelsea golfers will have both a fall and scoring schedule this year.

The fall schedule of meets will prepare the eight varsity golfers for the state regional tournaments to be held Oct. 16 at Grand Blanc Country Club. State finals are Oct. 23.

Last Thursday Chelsea golfers defeated Michigan Center at the Inverness Country Club, 180 to 182. Glen Musolf was medalist with a score of 42 for nine holes. Captain Dave Powers had 44, Mark Policht, 44, and Ken Kusterer, 50.

Today, Chelsea meets Stockbridge at Inverness at 4 p.m.

Police Arrest E. Roark On Marijuana Charge

Chelsea police arrested Eric Michael Roark, 21, 1299 M-52, Thursday, Sept. 21, on a charge of selling marijuana. The warrant for Roark's arrest was issued by the Michigan Special Police Drug Unit.

Roark was arrested in the Chelsea police station.

We produced 6.3 million 100-pound bags of dry edible beans last year, enough for each Michigan citizen to have 71 pounds. Value to growers, \$52 million.



FRED A. WORDEN, Jr., the new Standard Oil dealer at 889 S. Main, has received a diploma from a comprehensive course in service station operation. A three-week course, it is conducted at a specially-equipped center operated by the Standard Oil Division of the American Oil Co. in Detroit. Worden began the course Aug. 16 and was schooled in all phases of service station operation and care of customers' automobiles. Especially stressed were maintenance of a clean, attractive station, management of money, manpower and materials, and knowledge of American's line of products. Worden graduated from Chelsea High school and has attended Washtenaw Community College. He and his wife, Terry Lynn, reside at 4221 E. Cedar Lake.

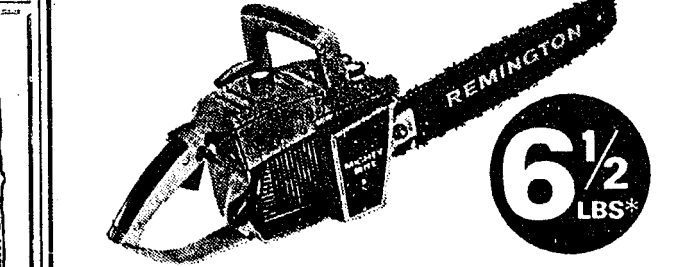
All fruit combined, Michigan grew 136 pounds for every Michigan citizen last year. Value to producers in 1970: \$61,476,000.

CHELSEA FINANCE CORP.
\$25 to \$1,000
For Any Worthwhile Purpose
See or Call
FRANK HILL
at 475-8631
111 PARK STREET
CHELSEA, MICH.

EYE EXAMINATIONS NO
PRESCRIPTIONS FILLED YES
With Bausch & Lomb corrected curve lenses, quality frames.

WINANS OPTICAL
PHONE 475-1233
114 N. Main (in Sylvan Hotel) Chelsea, Mich.
DAVID WINANS, Optician
(30 Years with Johnston Optical Co.)
APPOINTMENTS NOT NECESSARY

IT'S HERE!
NEW LIGHTWEIGHT MIGHTY MITE
REMINGTON CHAIN SAW



EASY TO HANDLE, FUN TO USE
This 6½ pound Mighty Mite Remington Chain Saw is so versatile you'll use it for:

Felling trees up to 2 feet thick
Cutting firewood
Trimming, pruning, clearing brush
Camping, summer home projects
Building outdoor furniture

This easy starting lightest-of-all Remington Chain Saws comes fully assembled and features semi-automatic oiling, quiet low-tone muffler, and cushioned hand grips. You'll like its light weight, easy handling, and low, low price. See it now.

\$129.95

*less bar and chain

GAMBLES
110 N. Main St. Phone 475-7422

HEADQUARTERS for GUNS
AUTHORIZED DEALER
BROWNING

We BUY, SELL and TRADE
GUNS
AUTHORIZED BROWNING DEALER

GAMBLES
110 N. Main St. Phone 475-7422

SPECIAL

thru Wednesday, Oct. 6, 1971

BRAZIER FISH & FRIES
69¢

Home of fine Brazier Foods

Dairy Queen
brazier.

901 S. MAIN ST., CHELSEA PHONE 475-2677

ODD-LOT

SALE

We've accumulated 40 squares of odd lot 3-in-1 Sealtab shingles

(6 squares or less per color)

Take All or Any Part!

5.95

Square (100 Sq. Ft.)
Reg. \$10.95

Chelsea Lumber

THE SUPERMARKET THAT'S JUST A LITTLE BIT BETTER

Stop & Shop

14901 Old U.S.-12
Corner at M-52
Chelsea



Catch the Savings We Pass Along to You . .

THE KNOW HOW OF INTELLIGENT MEAT BUYING IS REALLY 'KNOW WHERE'

Our customers have learned to depend on the outstanding quality of Stop & Shop meats — unfailing satisfaction with every cut they purchase. The finest quality, together with the experienced expertise of our meat cutting experts, makes an unbeatable combination!

Prices Effective Thursday, September 30, 1971,
through Sunday, October 3, 1971.

U.S.D.A. CHOICE BEEF

CHUCK ROASTS

U.S.D.A. Choice Tender

Chuck Roasts . . . Center Blade Cut **69¢ lb.**

U.S.D.A. Choice, So Delicious! Tender!

Chuck Roasts . . . Round Bone **79¢ lb.**

U.S.D.A. Choice, Juicy, Boneless

Chuck Roasts . . . English Cut **89¢ lb.**

U.S.D.A. Choice Boneless

Chuck Roasts . . . Flat Cut **89¢ lb.**

Pot Cut!
Tender!
Juicy!
Delicious!

59¢ lb.

ASSORTED VARIETIES PESCHKE'S
LUNCHEON MEATS

14-Oz.
Pkg.

69¢

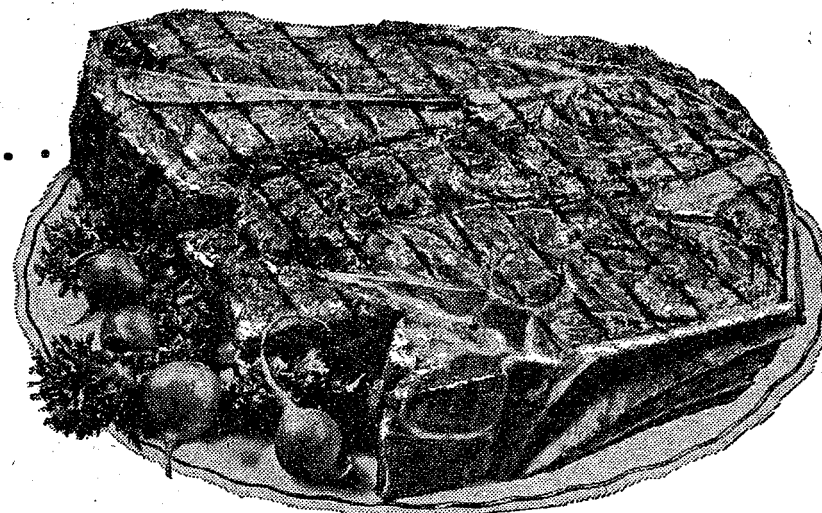
You'll cheer
This Winner!

TOP QUALITY

SMOKED PICNICS

Hickory Smoked!
Sugar Cured!

39¢ lb.



U.S.D.A. Choice, Delicious, Tender, Juicy

Chuck Steaks . . . Blade Cut Great on Grill **79¢ lb.**

Top Quality Fresh Sliced

Beef Liver **49¢ lb.**

Fall Favorite! Kniep

Corned Beef Rounds . . **99¢ lb.**

Meadowdale Pan-Ready Thin Sliced

Bacon 1-Lb. Pkg. **59¢**

NEW!
MARDI-GRAS TOWELS

3 Jumbo Rolls **\$1.00**

CARNIVAL
ICE CREAM SANDWICHES

2 6 Sandwich Pkgs. **75¢**

BANQUET FRESH FROZEN
CREAM PIES

14-Oz. Pie **19¢**

LIBBY'S
PORK & BEANS

1-Lb., 5-Oz. Can **15¢**

LIBBY'S
FRUIT COCKTAIL

1-Lb., 1-Oz. Can **22¢**

Courteous, Friendly Service

For Your Shopping Convenience . . .

STORE HOURS:
Monday thru Saturday

9 a.m. to 9 p.m.

Sunday, 10 a.m. to 5 p.m.

Plenty of **FREE PARKING**

McDONALD LOW-FAT

MILK

Plastic Jug
Gal.

79¢

BREAST-O-CHICKEN LIGHT CHUNK

TUNA FISH

6½-Oz. Can

38¢

LIBBY'S
TOMATO CATSUP

14-Oz. Bottle

15¢

ICE COLD BEER & WINE

Farm Fresh Produce

Fresh, Fancy, Mouth-Watering

MICHIGAN PEACHES 1-Lb. **19¢**

U.S. No. 1 Michigan

DELICIOUS APPLES 3-Lb. Bag **59¢**

Crisp

CARROTS 1-Lb. Cello Bag **12¢**

Fresh Pascal

GELERY 24-Size Stalk **29¢**

New

CABBAGE 1-Lb. **8¢**

FRESH FROZEN MEADOWDALE

ORANGE JUICE

6-Oz. Can

18¢

LAND-O-LAKES FRESH CREAMERY

BUTTER

1-Lb.

In Quarters **77¢**

EASY MONDAY

FABRIC SOFTENER

½ gal. 49¢

The Last Week at This Low Price!
McDONALD PREMIUM

ICE CREAM

½ gal. 79¢

CANADA DRY

FRUIT POP

28-Oz. No-Return Bottle

19¢

ORANGE CRUSH

6

STRAWBERRY CRUSH

12-Oz. Cans

GRAPE CRUSH

69¢

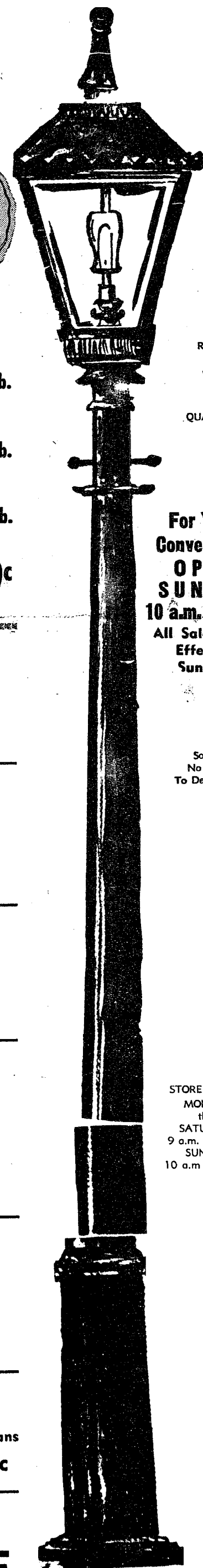
Shop in a pleasantly cool
AIR-CONDITIONED STORE

WE
RESERVE
THE
RIGHT
TO
LIMIT
QUANTITIES

For Your
Convenience
**OPEN
SUNDAY**
10 a.m. - 5 p.m.
All Sale Prices
Effective
Sundays

Sorry,
No Sales
To Dealer

STORE HOURS:
MONDAY
thru
SATURDAY
9 a.m. to 9 p.m.
SUNDAY
10 a.m. to 5 p.m.





BOWLING NEWS



Hi Point Mixed League

Standings as of Sept. 21

	W	L
ver Rats	82	62
at Times	82	62
ock Outs	81	63
ey Katz	78	66
adnaughts	77	67
ur Squares	77	67
ation WVP	77	67
Steppers	67	77
ly Terrors	62	82
ngation Marks	62	82
eg-a-Lings	61	83
sy Riders	57	87

Men, over 450 series: O. Inbody, 7; D. Crum, 509; H. Schultz, 6; M. Purdy, 497; L. Lofquist, 4.

Men, over 160 games: O. Inbody, 5, 162, 160; M. Purdy, 193, 188; Crum, 204; D. Carpenter, 187; Schultz, 165, 168; K. Lofquist, 5, 166.

Women, over 425 series: G. De-ither 438; C. Sowle 456.

Women, over 150 games: Pat-erson, 156; P. Patterson, 150; Sowle 166; K. Gould 160 159; McNutt, 154; G. DeSmithier, 6; B. Barth, 151; C. Teachworth, 60; C. Klapperich 150.

Junior Swingers

Standings as of Sept. 25

	W	L
he "74" Swingers	9	3
he Rods	6	6
he B. C's	6	6
he Strikers	6	6
aturday Strikers	6	6
aturday Strikers	6	6
he B. A.	5	7
he Champions	5	7

Games over 130: B. McGuire, 13; V. Burnett, 131; J. Collins, 178; M. Burnett, 136, 137; D. Fitzsimmons, 133, 137; T. Abdon, 131; M. Fahrner, 148; D. Popo-nich, 130; J. Toon, 140; B. Skitten-elm, 165, 160, 148; D. Messner, 17, 179; D. Alber, 185, 221; K. Sannes, 144.

Series over 390: M. Burnett, 395; D. Fitzsimmons, 395; B. Kittenhelm, 473; D. Messner, 455; D. Alber, 531.

Sunday Swingers

Mixed League

Standings as of Sept. 26

	W	L
Red Barons	7	1
ight On's	7	1
trangers	6	2
K & B	6	2
rinkers	4	4
imelighters	4	4
Alley Cats	3	5
Team No. 10	3	5
Harvards	3	5
Butternuts	2	6
Half Mooners	2	6
M-P's	1	7

Men's 500 series: G. White, 51; G. Dresch, 508; R. Nix, 517; I. Schaffner, 537; W. Brown, 540.

Women's 450 series: M. L. West-cott, 500; A. Schaffner, 450; R. McGibney, 464.

Men's 200 games: G. White, 228; I. Schaffner, 239; D. McGibney, 223; W. Brown, 225.

Women's 150 games: R. Mc-Gibney, 156, 173; A. Schaffner, 155, 159; P. Shirling, 158; E. Hay-cock, 173, 151; K. Dyer, 166; A. Steinaway, 158; M. L. Westcott, 91, 169.

Chelsea Women's Bowling Club

Standings as of Sept. 22

	W	L
Chelsea Milling	10	2
Parish's Cleaners	10	2
Washtenaw Engr. Co.	10	2
Wolverine Bar	8	4
Jiffy Market	8	4
Community Serv. Press	6	6
Chelsea Lanes	5	7
Schneider's Grocery	4	8
Norris Electric	4	8
Jiffy Mixes	3	9
Ugly Ducklings	3	9
N. American Rockwell	2	10

450 series over: B. Fritz, 534; P. Shoemaker, 516; G. Kuhl, 493; A. Boham, 497; B. Parish, 487; D. Verwey, 474; C. Stoffer, 467; P. Poertner, 463; R. Hum-mel, 463; S. Klink, 460; M. E. Sutter, 459; H. Morgan, 457; A. Alexander, 456; B. Larson, 456.

450 games over: B. Fritz, 172, 176, 186; P. Shoemaker, 155, 171, 190; G. Kuhl, 175, 156, 167; A. Boham, 184, 164; B. Parish, 172, 158, 157; D. Verwey, 153, 173; C. Stoffer, 170, 157; P. Poertner, 165, 171; R. Hummel, 150, 155, 158; S. Klink, 170; M. E. Sutter, 179; H. Morgan, 165; A. Alexan-der, 181; B. Larson, 151, 172; R. Lutovsky, 152; 153; L. Montgom-ery, 157; A. Eisele, 153, 174; P. Wurster, 151, 159; C. Bradbury, 150; M. Eder, 158; B. Mshar, 158, 182; L. Orlovski, 153; A. Fahrner, 182; J. Rowe, 167; J. Hafner, 150; P. Abdon, 193; M. Kozminski, 178; B. Wengren, 170; J. Norris, 167, 150; G. Penhallegon, 157.

Chelsea Nite Owl League

Standings as of Sept. 27

	W	L
Steele's Heating	9	3
Pump & Pantry	8	4
Chelsea Finance	8	4
Jack & Son Barbers	8	4
Smith's AAA	6	6
Poster's Men's Wear	6	6
Cavanaugh Lake Store	5	7
Ted's Standard	5	7
Heller Electric	5	7
McCalla Mobile Feeds	4	8
Arco Sparks	4	8
Team No. 8	4	8

500 series: G. Rentschler, 585; R. Smith, 551; R. Mix, 543; D. White, 540; G. Miller, 527; A. Gies-ke, 518; J. Turner, 517; J. Wal-dyke, 516; A. Peterson, 515; W. Maier, 504; C. Staphis, 501; J. Eder, 500.

200 games: G. Rentschler, 226; R. Herrst, 205; W. Maier, 204; R. Smith, 203; J. Hartka, 203; R. Green, 201; R. Nix, 200; A. Gies-ke, 200.

Leisure Time League

Standings as of Sept. 28

	W	L
The Nags	7	1
Team 2	6	2
Alley Cats	5	3
Rug Rats	3	5
Team 6	3	5
The Mums	0	8

Over 140 games: E. Swanson, 156; S. Weston, 147; C. Short, 169; K. Haywood, 156; S. Centilli, 155; W. Wheaton, 176.

400 series: S. Centilli, 410; V. Wheaton, 433.

The larger sized strawberries cultivated commercially in the United States today, evolved from South American strawberry plants brought here in the 1790's.

Chelsea Lanes Mixed

Standings as of Sept. 24

	W	L
Fitzsimmons Exc.	17	4
Marsh & Eder	13	8
The Pub	12	9
Meabon's	12	9
Chelsea Lanes	12	9
Bolling Sanitation	11	10
Jarvis & Goltra	11	10
A. A. Centerless	10	11
Barkely & Gephart	9	12
Heim & Arrington	9	12
Sables Collision	6	15
Morgan & Turner	4	17

Women's 150 games: F. Gephart, 177, 193, 165; M. Sutter, 173; K. Gephart, 177; A. Turner, 173; A. Turner, 173; B. Smith, 170, 157; L. Alexander, 157; B. Adams, 157; H. Morgan, 154; S. Ellen-wood, 153; L. Gilmore, 152; L. Jarvis, 150; D. Cozzens, 150.

Women's 450 series: F. Gephart, 525; A. Turner, 452.

Men's 175 games: D. Eder, 191, 217, 194; D. Alexander, 185, 211; A. Keezer, 175, 190; R. Bauer, 186, 178; J. Goltra, 185; T. Marsh, 183; L. Keezer, 181, 179; B. Smith, 179; R. Gilmore, 177; T. Adams, 177.

Men's 475 series: D. Eder, 602; D. Alexander, 547; A. Keezer, 522; R. Bauer, 518; T. Admas, 499; R. Gilmore, 490; L. Keezer, 485; J. Coltra, 485.

Junior House League

Standings as of Sept. 23

	W	L
Wolverine No. 1	21	7
Chelsea Lanes	21	7
J & S Tool	19	9
The Pub	19	9
Gambles	18	10
Smith's AAA Service	14	14
3-D Sales & Service	13	15
Boyer Automotive	10	18
Bobs Beefers	9	19
Jiffy Mix	9	19
Wolverine No. 2	8	20
N. American Rockwell	7	21

200 games: K. Larson, 256; O. Johnson, 226; J. Ledwidge, 228; J. Toma, 206, 203; J. Myning, 214; R. Kinge, 204; D. Eder, 214; L. Fahrner, 209; N. Fahrner, 211, 201; F. Barkley, 204; W. Brown, 202; H. Burnett, 203; R. Erskine, 202.

600 series: K. Larson, 616; O. Johnson, 600; J.T. Oma, 602; N. Fahrner, 600.

500 series: A. Fleischmann, 551; S. Policht, 534; J. Ledwidge, 530; J. Myning, 571; J. Wahl, 515; E. Greenleaf, 535; D. Eder, 559; D. White, 545; R. Kye, 500; A. Sannes, 536; R. V. Worden, 530; L. Fahrner, 562; G. Weir, 532; W. Brown, 522; H. Burnett, 526; R. Erskine, 513.

Chelsea Suburban

Standings as of Sept. 22

	W	L
Patty Ann	11	1
Dana	11	1
Dairy Queen Brazier	9	3
Pittsfield Plastics	9	3
Artex Roll-Ons	7 1/2	4 1/2
Chelsea Lanes	5	7
Foor Mobil	5	7
Waterloo Garage	5	7
Frisinger Realty	4	8
State Farm	2 1/2	9 1/2
Dancer's	2	10
Chelsea Sate Bank	1	11

150 games and over: B. Smith, 167, 196; N. Prater, 158; D. Cozzens, 170, 168; G. Baczynski, 153, 167; J. Proctor, 168; B. Eder, 164; R. McGibney, 170, 164; A. Bohne, 153; L. Beeman, 162, 167, 162; S. Steele, 158; S. Moore, 152; C. Peterson, 169; R. Devine, 157; G. Bolton, 181, 156; B. Fike, 167, 158; G. Wilkerson, 169; H. Har-ison, 152; D. Kinsey, 181; K. Chapman, 150; G. DeSmithier, 158; N. Packard, 167; J. Buku, 158; E. Yocum, 174; A. Hocking, 156, 165; M. Olson, 151, 161; E. Schultz, 153; E. Miller, 157.

425 series and over: B. Smith, 503; N. Prater, 438; D. Cozzens, 464; G. Baczynski, 449; J. Proctor, 440; B. Eder, 438; R. McGibney, 455; L. Beeman, 481; C. Pe-terson, 434; G. Bolton, 427; G. Wilkerson, 428; D. Kinsey, 467; G. DeSmithier, 444; N. Packard, 440; L. Jarvis, 432; J. Buku, 428; E. Yocum, 441; A. Hocking, 463; M. Olson, 436; E. Miller, 443.



Senior House League

Standings as of Sept. 27

	W	L
Spaulding Chevrolet	11	1
Sam's Barber Shop	8	4
Bogar Builders	8	4
Pub Bar	7	5
Sylvan Center	7	5
Chelsea Cleaners	7	5
Dana No. 1	7	5
Chelsea Grinding	5	7
Seitz's Tavern	4	8
Murphy's Barber Shop	4	8
Schneider's Grocery	3	9
Dana No. 2	1	11

500 series: J. Wilson, 590; M. Murphy, 500; D. Coppernoll, 500; N. Packard, 567; M. Kern, 502; D. White, 559; A. Fletcher, 512; H. Morton, 505; W. Moss, 519; D. Hafley, 523; G. West, 519; E. Hafley, 503; D. Bauer, 573; E. Keezer, 551; R. Bauer, 515; T. Kruse, 520; E. Harook, 549; G. Knickerbocker, 538; N. Ernst, 538; G. Lawrence, 564; C. Genske, 500; J. Eder, 513; T. McClear, 545; R. Spaulding, 508; J. Harook, 518; L. Salyer, 513; N. Fahrner, 566.

200 games: L. Salyer, 201; N. Fahrner, 202; G. Lawrence, 210; C. Genske, 200; T. McClear, 208; E. Harook, 213; G. Knickerbocker, 215, 204; L. Hafley, 201; D. Bauer, 203, 212; E. Keezer, 203; G. West, 207, 211; N. Packard, 203; T. Steele, 202; M. Kern, 201; J. Wil-son, 212.

Charlie Brown & Snoopy's Friends

Prep Division

Standings as of Sept. 25

	W	L
Bearcats	8	1
Pinfighters	6	3
Good Guys	6	3
Mustangs	5	4
Flip Flop Mop Tops	5	4
Bullpups	3	6
Fantastic 5	2 1/2	3 1/2
Strikers	2	4
Eagles	2	7
Pros	1 1/2	7 1/2

Games over 100: K. Milliken, 121; J. Puch, 156, 150; J. Sweet, 105, 131; B. Lewis, 170, 141; M. Bowen, 119, 138; K. Mshar, 109; D. Craft, 121; C. Sannes, 144; B. Bennett, 118; J. Boyer, 177, 145; M. Foster, 121; B. McGibney, 109, 104; D. Alexander, 105, 133; D. Thompson, 130; K. Steinaway, 110, 121; J. French, 116, 164; J. Alexander, 128; M. Schmidt, 110; A. Kalishek, 125; B. Lovely, 121; M. Dickens, 112; B. Kalishek, 144.

Series over 200: K. Milliken, 220; J. Push, 306; J. Sweet, 236; B. Lewis, 311; M. Bowen, 257; K. Mshar, 202; D. Craft, 204; C. Sannes, 240; B. Bennett, 221; J. Boyer, 322; M. Foster, 215; B. McGibney, 213; D. Alexander, 238; D. Thompson, 233; K. Steinaway, 331; J. French, 280; J. Alexander, 281; A. Kalishek, 212; B. Lovely, 207; B. Kalishek, 225.

Charlie Brown and Snoopy's Friends

Peanut League

Standings as of Sept. 25

	W	L
Snoopy Stars	9	0
Pin Crackers	8	1
Harlem Globetrotters	8	1
Meat Balls	8	1
Super Stars	3	6
Strikers	0	9
French Fries	0	9
Flintstones	0	9

Series over 100: B. Freeman.

Chelsea Rod & Gun Club

TRAP SHOOT

7103 Lingane Rd.

Open Every Sunday

10 a.m. to 2 p.m.

Until Hunting Season Opens

Various prizes up to \$10

Value for top scorers.

Tri-City Mixed League

Standings as of Sept. 24

	W	L
Jiffy Mixes	14	2
Poor Mobil	10	6
Chelsea Cleaners	10	6
Sprague Buick & Olds	10	6
Smith's Service	8	8
Trail Blazers	8	8
4-W's	7	9
Detting	6	10
Heydlauff's Appliances	6	10
3-D Sales & Service	6	10
Wolverine Tail & Small	6	10
Shiver's	5	11

500 series, men: G. Allen, 512; B. Cruse, 523; D. Eder, 502; R. Fike, 563; R. Fouty, 523; E. Har-ook, 555; P. Maynard, 553; G. Miller, 501; R. V. Worden, 525.

200 games, men: K. Fike, 201, 202; E. Harook, 202; P. Maynard, 246.

450 series, women: V. Allen, 480; D. Fouty, 525; E. Miller, 483; P. Parish, 464.

150 games, women: V. Allen, 159, 178; M. Ashmore, 184; G. Detting, 150, 178; B. Fike, 161; D. Fouty, 159; D. Fouty, 150, 205, 170; R. Harook, 175; B. Kunzelman, 157; E. Miller, 171, 172; B. Par-ish, 167, 164; M. Weston, 185.

Guys and Gals Mixed League

Standings as of Sept. 23

	W	L
Chelsea Lanes	7	1
Seitz Tavern	6	2
Pub No. 1	5	3
The Odd Couples	5	3
Pleasant Lake Resort	5	3
Team No. 1	5	3
Pub No. 2	4	4
Chelsea Standard	3	5
Lanewood	3	5
Grass Lake	2	6
Hay Haulers	2	6
Norris Electric	1	7

Team high game: Pleasant Lake Resort, 333.

Team high series: Pleasant Lake Resort, 2,422.

Women's high game: N. Collins, 190.

Women's high series: N. Collins, 580.

Women's 150 or over games: L. Sanderson, 154, 150; C. Timmer-man, 153, 177; D. Sannes, 155; P. Elliott, 150, 166; P. Huston, 167; N. Collins, 190, 186, 184; S. Moore, 160, 161, 175; S. Zink, 160.

Women's 450 or over series: S. Moore, 496; N. Collins, 560; P. El-liott, 456; C. Timmerman, 472.

Men's high game: C. Sanderson, 189.

Men's high series: F. Cooper, 526.

Men's 175 or over games: C.

The Chelsea Standard, Thursday, September 30, 1971

Sanderson, 179, 189; O. Timmer- man, 184; D. Pierce, 178; J. El- liott, 186; F. Cooper, 187; R. Mock, 179.	501; E. Williams, 404; D. But- ler, 409; C. Shepherd, 457; J. Shep- herd, 414; K. DelPrete, 431; N. Hill, 405; J. Lewis, 434; L. Keezer, 413; J. Priest, 434; J. Rabbitt, 469; G. Brier, 423; E. Reynolds, 415.
---	---

140 and over games: K. Brett-
schneider, 141; P. Patterson, 151;
P. Patterson, 161; D. Kinsey, 169,
159, 173; D. Keezer, 157; E. Wil-
liams, 153; R. Strieter, 148; D.
Butler, 141, 160; C. Shepherd, 181,
162; J. Shepherd, 143, 146; S.
Parker, 153; D. Dirlam, 156; K.
DelPrete, 151, 148; N. Hill, 152;
J. Myers, 140, 145; J. Lewis, 179;
L. Keezer, 145; J. Priest, 146, 162;
J. Rabbitt, 188, 155; G. Brier,
154, 144; E. Reynolds, 141, 148;
A. Schneider, 154.

Splits converted: H. Ringe, 5, 8,
10 and 6, 10; G. Klink, 6, 10; J.
Lewis, 6, 10; K. DelPrete, 4, 6; D.
Dirlam, 5, 8, 10.

Rolling Pin League

Standings as of Sept. 28

GIRL
SCOUT
NEWS

TROOP 82—

We opened our meeting by taking treasure and then we went outside. Each patrol made a campfire. We made s'mores. We did our meeting with the Girl Scout song and song.

Wendy Myers, scribe.

TROOP 169—

The final organizational meeting of Brownie Troop 169 will be held from 3:30 to 5 p.m. Monday, Oct. 4 at the First Congregational Church. Registration will cost \$2. Troop co-leaders are Mrs. McDonald and Mrs. Eisenbeiser. All girls and their mothers are requested to attend.

Sharp-edged metal decorations knit garments can cause holes, rips and runs, especially when garments are tumbled during cleaning or laundering. Cloth specialists at the Michigan State University Extension Service suggest that you either remove trim items before cleaning, or wrap them in aluminum foil while still on the garment.

Y-Indian Maidens
To Organize in Chelsea

A new organization for girls in first through sixth grades and their mothers, the Y-Indian Maidens, is coming to Chelsea.

According to Mrs. Judith Dugan, Chief of Monoway Nation, Y-Indian Maidens, the group—which is sponsored by the YM-YWCA in Ann Arbor—can multiply the things a mother and daughter can do together. During the year the Indian Maidens will go camping, canoeing and swimming, as well as hold doll, sewing and kite contests.

Mrs. Dugan hopes that there will be several Indian Maiden Tribes in the Chelsea area.

Organizational and informational meetings will be held Oct. 4 and 5 at 7 p.m. in the Ann Arbor YM-YWCA. Interested persons may attend either of those meetings, or call Mrs. Dugan at 475-1285 after 5 p.m.

Sour cream dressing enhances flavor of a fruit or molded fruit salad. Combine 1 teaspoon grated orange rind, 2 tablespoons orange juice, 2 tablespoons lemon juice, 1 tablespoon honey, 1/4 teaspoon paprika. Stir into 1 cup dairy sour cream. Chill thoroughly before serving. Makes about 1 1/2 cup dressing. Keeps well, covered, in refrigerator.

THE BIBLE ANSWERS

QUESTION: "Why do you regard the Bible as Inspired of God?"

ANSWER: We can only briefly summarize a few of the arguments in favor of accepting the Bible as inspired. Its indestructibility and its worldwide influence points to its divine nature. Men of all races and nations in all periods of history have wanted this book and have sought it out. Hope beyond this mortal life as inspired by the Bible, confirms its supernatural character.

To verify its integrity, the Bible has invincible evidence in ancient documents (over 4,000 manuscripts of the New Testament alone), historical evidence (the testimony of such competent historians as Josephus, Eusebius, and the post-apostolic fathers), and scientific support in the fields of archaeology, ethnology, and geology. If the Bible is untrue, then it is the greatest literary fraud the world has ever known, for its claims surpass those of any other book. One of its claims is that "all scripture is given by the inspiration of God" (II Tim 3:16). No other book has ever extended such claims for itself, and none of the claims of the Bible have ever been proven to be untrue.

CHURCH OF CHRIST

For questions or comments please write:
13631 Old US-12, Chelsea, Mich. 48118

+ Services in Our Churches +

ST. MARY CATHOLIC CHURCH

The Rev. F. Francis Wahowiak

Every Saturday—

7:30 p.m.—Mass.

Every Sunday—

Masses at 6:30 a.m., 8:00 a.m., 10:00 a.m., and 11:30 a.m.

CONGREGATIONAL CHURCH

(United Church of Christ)

The Rev. Daniel Kellin, Pastor

Every Sunday—

9:00 a.m.—Senior High Sunday school.

9:45 a.m.—Sunday school.

10:00 a.m.—Morning worship.

CHELSEA BAPTIST CHURCH

837 Wilkinson

The Rev. James Stacey, Pastor

Every Sunday—

10:00 a.m.—Sunday school.

11:00 a.m.—Worship service.

Nursery care available during all services.

6:00 p.m.—Junior and Senior Baptist Youth Fellowship.

7:00 p.m.—Evening worship.

Every Wednesday—

7:30 p.m.—Bible study and prayer meeting.

ST. BARNABAS

EPISCOPAL CHURCH

20500 Old US-12

The Rev. C. Walton Fitch, Vicar

Telephone 426-8815

Every Sunday—

9:15 a.m.—Holy Communion, first, third, and fifth Sundays.

9:15 a.m.—Morning Prayer, second and fourth Sundays.

ST. JACOB EVANGELICAL

LUTHERAN CHURCH

12501 Rietzmill Rd., Grass Lake

The Rev. Andrew Bloom, Pastor

Every Sunday—

9:00 a.m.—Sunday school.

10:15 a.m.—Divine services.

IMMANUEL BIBLE CHURCH

145 E. Summit St.

Gayle DeSmyther, Lay Leader

Every Sunday—

9:45 a.m.—Sunday school, nursery provided.

11:00 a.m.—Morning worship, nursery provided.

7:00 p.m.—Evening service.

Every Wednesday—

Family hour, prayer meeting and Bible study.

NORTH LAKE

UNITED METHODIST CHURCH

The Rev. Harry Weeks, Pastor

Every Sunday—

9:30 a.m.—Worship service.

10:30 a.m.—Sunday school.

ST. PAUL

UNITED CHURCH OF CHRIST

The Rev. Warner Siebert, Pastor

Saturday, Oct. 2—

9:00 a.m.—Junior High confirmation program.

Sunday, Oct. 3—

9:15 a.m.—Church school.

10:30 a.m.—Worship. Sermon title, "It's Better To Light A Single Candle."

Communion.

2:30 p.m.—Ann Arbor-Jackson Association meeting.

8:00 p.m.—Stewardship committee.

1:00 p.m.—Mission Club at church; Elsie Paul, hostess (note date change).

Tuesday, Oct. 5—

7:30 p.m.—Women's Fellowship board.

Wednesday, Oct. 6—

7:15 p.m.—High School Choir.

7:30 p.m.—Baptismal counseling.

8:15 p.m.—Chancel Choir.

OUR SAVIOR

LUTHERAN CHURCH

Rebekah Hall, 1194 M-52

The Rev. William H. Keller, Pastor

Every Sunday—

9:00 a.m.—Sunday school.

10:30 a.m.—Worship service.

Every Tuesday—

3:30-5 p.m.—Confirmation I.

Every Thursday—

4:00-5:30 p.m.—Confirmation II.

Every Saturday—

9:00 a.m.—11:00 a.m.—Confirmation III.

FIRST CHURCH OF CHRIST,

SCIENTIST

1883 Washtenaw Ave., Ann Arbor

Sunday, Oct. 3—

10:30 a.m.—Sunday school.

10:30 a.m.—Morning service.

Lesson-sermon: "Unreality."

GREGORY BAPTIST CHURCH

The Rev. Grant Lapham, Pastor

Every Sunday—

10:00 a.m.—Worship service.

11:15 a.m.—Church school.

6:30 p.m.—Baptist Youth Fellowship.

7:30 p.m.—Evening worship service.

FIRST UNITED

PRESBYTERIAN CHURCH

Unadilla

The Rev. T. H. Liang

Every Sunday—

9:45 a.m.—Sunday school.

11:00 a.m.—Worship service.

Every Tuesday—

8:00 p.m.—Choir practice.

FIRST UNITED

METHODIST CHURCH

The Rev. Clive Dickens, Pastor

Sunday, Oct. 3—

9:00 a.m.—Sunday school. Nursery through adult.

10:00 a.m.—Worship service.

ZION LUTHERAN CHURCH

Corner of Fletcher, Waters Rds.

(Rogers Corners)

The Rev. John R. Morris, Pastor

Saturday, Oct. 2—

Youth Instruction Classes.

9:00 a.m.—9th grade.

10:00 a.m.—10th grade.

11:00 a.m.—7th grade.

Sunday, Oct. 3—

World Wide Communion Sunday.

9:00 a.m.—Sunday school.

10:15 a.m.—Worship.

7:00 p.m.—Luther League.

Monday, Oct. 4—

7:15 p.m.—Junior Choir.

8:00 p.m.—Senior Choir.

Wednesday, Oct. 6—

7:45 p.m.—Women of Zion, mass meeting.

ST. THOMAS

EVANGELICAL LUTHERAN

The Rev. Daniel L. Mattson, Pastor

Sunday, Oct. 3—

9:30 a.m.—Sunday school.

10:30 a.m.—Worship service.

VILLAGE UNITED METHODIST

CHURCH OF WATERLOO

8118 Washington St.

Mrs. Altha Barnes, pastor

Every Sunday—

10:00 a.m.—Sunday school.

11:15 a.m.—Morning worship.

First and Third Saturdays—

7:00 p.m.—Youth Fellowship at Village Church Sunday school house.

ST. JOHN'S EVANGELICAL

AND REFORMED CHURCH

(United Church of Christ)

Francisco

The Rev. Robert Townley

Every Sunday—

10:00 a.m.—Worship service.

10:20 a.m.—Sunday school.

FIRST UNITED METHODIST

CHURCH OF WATERLOO

Parks and Territorial Rds.

Mrs. Altha Barnes, Pastor

Every Sunday—

9:15 a.m.—Morning worship.

10:30 a.m.—Sunday school.

First and Third Saturdays—

7:30 p.m.—Youth Fellowship at Village church Sunday school house.

CHURCH OF CHRIST

13861 Old US-12, East

Lionel S. Burger, Minister

Every Sunday—

10:00 a.m.—Church school.

11:00 a.m.—Worship service.

6:00 p.m.—Worship service.

Every Wednesday—

7:30 p.m.—Bible Study.

ST. JOHN'S EVANGELICAL

AND REFORMED CHURCH

(United Church of Christ)

Rogers Corners

The Rev. David J. Kleis

Every Sunday—

9:30 a.m.—Sunday school.

10:30 a.m.—Morning worship.

NORTH SHARON

COMMUNITY BIBLE CHURCH

Sylvan and Washburn Rds.

The Rev. William Enslen, Pastor

Every Sunday—

10:00 a.m.—Sunday school.

11:00 a.m.—Worship service.

6:30 p.m.—Young People's service.

Every Wednesday—

7:30 p.m.—Prayer meeting.

SALEM GROVE

UNITED METHODIST CHURCH

The Rev. Harry Weeks, Pastor

Every Sunday—

10:00 a.m.—Sunday school.

11:00 a.m.—Worship service.

First Assembly of God Church

The Rev. Thode B. Thodeson

Every Sunday—

9:45 a.m.—Sunday school.

11:00 a.m.—Worship service.

7:00 p.m.—Evangelistic service.

Every Wednesday—

7:00 p.m.—Midweek services.

BETHEL EVANGELICAL

AND REFORMED CHURCH

(United Church of Christ)

Freedom Township

The Rev. Roman A. Reineck

Every Sunday—

10:00 a.m.—Worship.

10:00 a.m.—Sunday school.

CHELSEA MEDICAL CENTER

Every Wednesday—

1:30 p.m.—Worship service.

If you like to shampoo your hair in a lavatory bowl instead of under the shower, here's good news for you: A lavatory bowl is now available with your comfort and convenience in mind. There's a flexible spray arm at one side. The swing-away faucet is, at the other side instead of the more common center location. This virtually eliminates the hazard of bumping your head as you shampoo. Because the faucet is "out of the way," the spacious lavatory bowl can also be used to bathe the baby.

District Court Proceedings

In 14th District Court this week, Robert Beckman pled guilty to a charge of being drunk and disorderly. He was ordered to pay \$100 fine and costs or spend 10 days in jail.

Colet Crayton, Chelsea, was sentenced to one year probation and \$200 fine and costs on each of two counts of driving under the influence of liquor.

Barry A. Boone, Chelsea, pled guilty to a charge of speeding 40 mph in a 25 mph speed zone, and was ordered to pay \$21 fine and costs.

Margaret Hamilton, Ann Arbor was found guilty of creating a traffic hazard and was ordered to pay \$10 fine and costs.

Rickey Risner, Chelsea, was found guilty of assault and battery. He was sentenced to spend 30 days in jail with credit for time spent, and ordered to pay \$50 fine and costs. He was also sentenced to six months probation for trespassing and told to stay out of Manchester.

Steven Leed, Battle Creek, will be sentenced on Oct. 18 in Chelsea on a charge of fleeing a police officer.

Gerald Smith, Ida, pled guilty to a charge of speeding 45 mph in a 25 mph speed zone and was ordered to pay \$21 fine and costs.

Frieda Schumaier, Saline, was found guilty of speeding and was ordered to pay \$29 fine and costs or spend three days in jail.

Guy Roy, Manitou Beach, pled guilty to speeding 50 mph in a 35 mph speed zone and was ordered to pay \$21 fine and costs.

Wayne Crawford, Ann Arbor, pled guilty to speeding 60 mph in a 45 mph speed zone and was ordered to pay \$21 fine and costs.

Allen Robert Sampler, Pinckney, pled guilty to being drunk and disorderly and was ordered to pay \$50 fine and costs.

Ronald Short was found guilty of being a disorderly person, and was ordered to pay \$21 fine and costs or spend five days in jail.

Jack Kellogg, Manchester, was ordered to pay \$26 fine and costs on a charge of having no operator's license on his person.

Harry Stultz, Hudson, pled guilty to speeding 65 mph in a 45 mph zone, and was ordered to pay \$31 fine and costs.

Russell Patterson, Inkster, pled guilty to driving on a suspended license and also to speeding 64 mph in a 45 mph speed zone. He was ordered to pay \$31 fine and costs.



UP, UP AND AWAY: Kris Steinaway was the first-place winner—the only winner—in the Jaycee Auxiliary's balloon ascension contest which began at the Chelsea Community Fair on Aug. 24. The contest ended, at least unofficially, when Kris' balloon was found in Shickshinny, Pa., a small town on the Susquehanna River about 30 miles southwest of Wilkes-Barre, Pa. The card on Kris' balloon was the only one returned to the Auxiliary. Here Kris receives his first-place check from contest chairman Mrs. Robert Updegraff.

Ballon Soars 800 Miles

Remember the Jaycee Auxiliary balloon ascension contest—the release of 37 bright, helium filled balloons from the fair grandstands on Tuesday, Aug. 24?

This is the rest of the story. On Tuesday, Aug. 31, James Kline of Shickshinny, Pa., was doing his morning gardening chores before going off to Shickshinny's first day of school.

Suddenly, Kline saw a balloon caught in a bush near the garden.

Right! It was one of the balloons from the Chelsea Community Fair which had been carried some 800 miles by fair winds.

The card was legible, and Mrs. Kline returned it to the Jaycee Auxiliary. As is happened, it was the only card returned.

Owner of the balloon was Kris Steinaway, son of Mr. and Mrs. Art Steinaway, 2751 McKinley Rd., who was presented with a first-place check at the Jaycee Auxiliary meeting held Sept. 21.

County 4-H Leaders, Members To Be Recognized for Service

A recognition day for Washtenaw county 4-H club members and their leaders will be held Oct. 4 at 7:30 p.m. in the Chelsea High School auditorium.

Those honored will be Tel-wards champions on the county, district and state level, project medal winners, horse, dairy and livestock judging teams, county show herdsman winners, public speaking champions, softball winners, and adult leaders completing one, five, 10, 15, 20, 25, 30, 35, and 40 years of service.

The 4-H Council urges all 4-H club members and their parents to attend the event. The Council suggests that 4-H clubs might enjoy attending as a group.

Among those being honored will be the Washtenaw County Senior Livestock judging team which placed first in the competition at the Michigan State Fair. Team members are: Mary Alice Girbach, Ken Feldkamp, Dan Baldus, and Mark Engle. The team was coached by Bill Lutz.

County project medal winners will also be honored. Categories and winners are:

Swine: Robert Baldus and Karen Baldus.
Beef: Robert Baldus and Steve Baldus.

Over-all Achievement: Steve Baldus and Denise Fallot.

Food Preservation: Elaine Zeeb and Judy Herter.

Horse: CeAnn Shipley, Peggy Schimmel, Mike Fisk and Bonita Binawanger.

Rabbits: Don Oltmanns.

Foods: Judy Luckhardt, Elaine Condit, James Woodward and Beth Woodward.

Knitting: Jill Hickman.

Clothing: Jodi Scott, Judy Luckhardt, Julie Scott, and Judy Herter.

Bread: Jodi Scott, Julie Scott, Elaine Condit and James Woodward.

Home Design: Peggy Konarske.

Flowers: Denise Fallot.

Leather: Mike Fisk.

Photography: Beth Woodward.

1971 Herdsman winners are as follows:

Beef: Blue Ribbon Livestock, Scio Lodi Farmers and Saline 4-H Farmers.

Dairy: Rogers Corners Herdsman, Blue Ribbon Livestock and Townline Workers.

Horse: Wranglers, Little Britches and Range Riders.

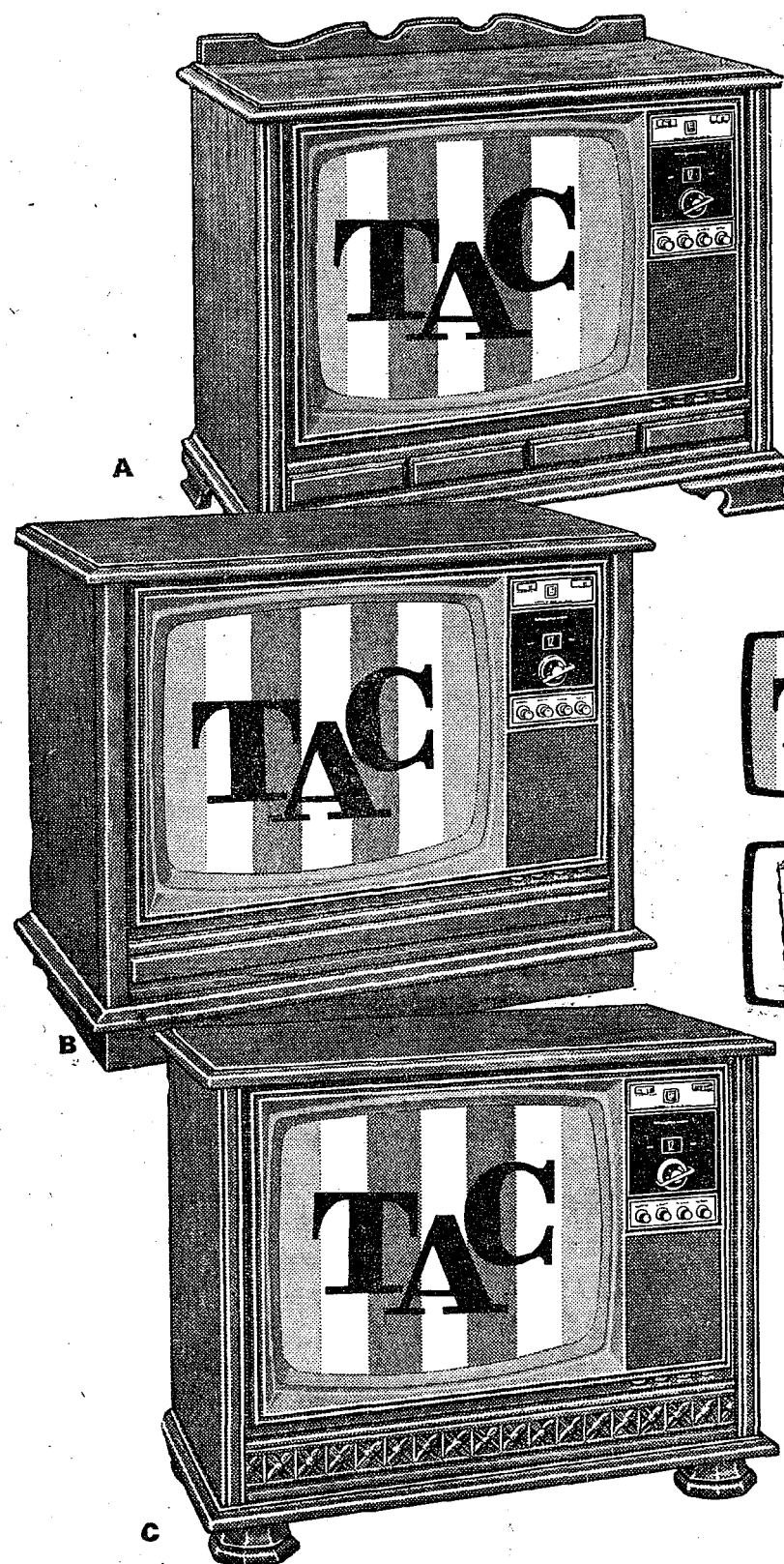
Rabbit and Poultry: Ypsi Hi Flyers, Champion Troopers, and Wide Awake.

Sheep: Rogers Corners Herdsman, Busy 2 in 1 and Saline 4-H Farmers.

Swine: Blue Ribbon Livestock, Saline 4-H Farmers and Scio Lodi Farmers.

60TH ANNIVERSARY VALUES FROM Magnavox

CELEBRATING LEADERSHIP and EXCELLENCE IN ELECTRONICS SINCE 1911



Introducing
three new
**BIG-SCREEN
COLOR CONSOLES**
with...

TOTAL AUTOMATIC COLOR

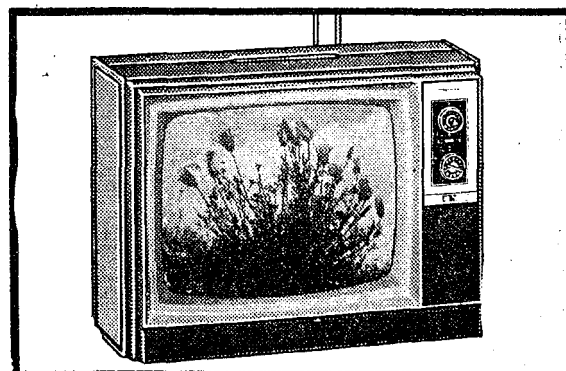
... the complete electronic system that lets you kick the bothersome TV tuning habit... by automatically keeping flesh tones natural and pictures sharp—when you switch channels or when the scene changes. TAC will always remember to give you a perfectly-tuned, precise 23" diagonal measure picture—*instantly* and *automatically*—on every channel, every time! Set once and forget it!

Magna-Power Chassis—use predominately solid-state components for improved performance and increased reliability. 3 I.F. Stages and Keyed AGC assure optimum reception—even under adverse conditions. Greater reliability, too.

YOUR CHOICE OF STYLES
\$549

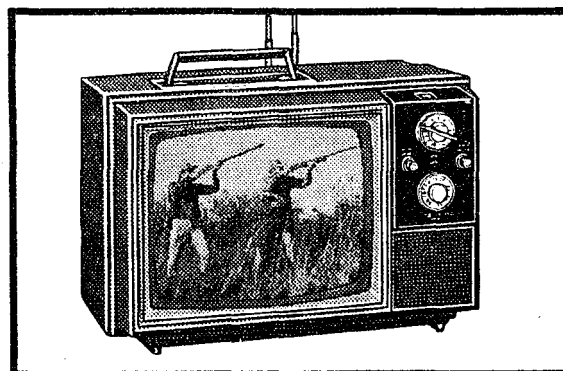
Truly beautiful to see—on or off! A. Early American—model 7324. B. Contemporary—model 7322. C. Mediterranean styling—model 7326. See them... and all the special Magnavox Anniversary values... including Stereo Combination Offers you can't afford to miss! Come in today.

Come in... also see our many other regularly-priced Magnavox Color Television Values.



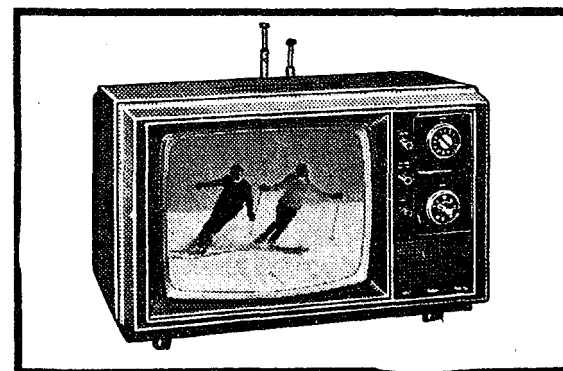
Simulated TV picture

Enjoy 18" diagonal measure pictures—at a very modest cost. This exceptional Magnavox, model 6270, offers such quality features as telescoping dipole antenna, convenient carrying handle, plus the Bonded Circuitry Magna-Power Chassis with Keyed AGC. It's perfect... anywhere! **\$349**



Simulated TV picture

Enjoy 14" diagonal measure pictures—at a very modest cost. This exceptional Magnavox, model 6226, offers such quality features as telescoping dipole antenna, convenient carrying handle, plus the Bonded Circuitry Magna-Power Chassis with Keyed AGC. It's perfect... anywhere! **\$279**



Simulated TV picture

Enjoy 12" diagonal measure color pictures—at a very modest cost. This exceptional Magnavox, model 6112, offers such quality features as telescoping dipole antenna, convenient carrying handle, plus the Bonded Circuitry Magna-Power Chassis. It's perfect for bedroom, kitchen or den! **\$269**

HEYDLAUFF'S

112 N. Main St., Chelsea

(Formerly Frigid Products)

Phone GR 9-6651

C. H. S. VARSITY JACKETS

With Genuine Leather Sleeves

Boys Sizes 10 to 18
Mens Sizes 34 to 46

"CHELSEA" Lettering on Back

\$29⁹⁵

Varsity Award Sweaters

Special Order Only — 4 Weeks Delivery

STRIETER'S MEN'S WEAR

"The Place To Go for Brands You Know"

Chelsea Rod & Gun Club TRAP SHOOT

7103 Lingane Rd.

Open Every Sunday

10 a.m. to 2 p.m.

Until Hunting Season Opens

Various prizes up to \$10
Value for top scorers.